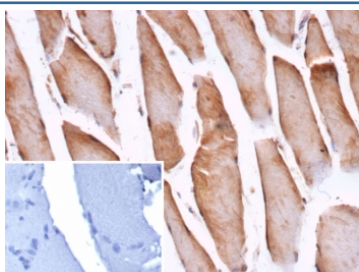


## Cofilin 2 Antibody / CFL2 [clone CFL2/9963] (V5657)

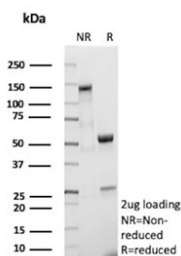
Catalog No.	Formulation	Size
V5657-100UG	0.2 mg/ml in 1X PBS with 0.1 mg/ml BSA (US sourced), 0.05% sodium azide	100 ug
V5657-20UG	0.2 mg/ml in 1X PBS with 0.1 mg/ml BSA (US sourced), 0.05% sodium azide	20 ug
V5657SAF-100UG	1 mg/ml in 1X PBS; BSA free, sodium azide free	100 ug

[Bulk quote request](#)

<b>Availability</b>	1-3 business days
<b>Species Reactivity</b>	Human
<b>Format</b>	Purified
<b>Clonality</b>	Monoclonal (mouse origin)
<b>Isotype</b>	Mouse IgG1, kappa
<b>Clone Name</b>	CFL2/9963
<b>Purity</b>	Protein G affinity
<b>UniProt</b>	Q9Y281
<b>Localization</b>	Cytoplasm
<b>Applications</b>	Immunohistochemistry (FFPE) : 1-2ug/ml
<b>Limitations</b>	This Cofilin 2 antibody is available for research use only.



IHC staining of FFPE human skeletal muscle tissue with Cofilin 2 antibody (clone CFL2/9963). Inset: PBS used in place of primary Ab (secondary Ab negative control).  
 HIER: boil tissue sections in pH 9 10mM Tris with 1mM EDTA for 20 min and allow to cool before testing.



SDS-PAGE analysis of purified, BSA-free Cofilin 2 antibody (clone CFL2/9963) as confirmation of integrity and purity.

## Description

Cofilin is ubiquitously expressed in eukaryotic cells where it binds to Actin, thereby regulating the rapid cycling of Actin assembly and disassembly essential for cellular viability. Cofilin is a low molecular weight protein that binds to filamentous (F) Actin by bridging two longitudinally associated Actin subunits changing the F-Actin filament twist. This process is allowed by the dephosphorylation of Cofilin Ser-3 by factors such as opsonized zymosan. Lim kinase 1, a serine kinase, phosphorylates Cofilin and renders it unable to bind and depolymerise F-Actin.

## Application Notes

Optimal dilution of the Cofilin 2 antibody should be determined by the researcher.

## Immunogen

A portion of amino acids 1-166 from human CFL2 protein was used as the immunogen for the Cofilin 2 antibody.

## Storage

Aliquot the Cofilin 2 antibody and store frozen at -20oC or colder. Avoid repeated freeze-thaw cycles.