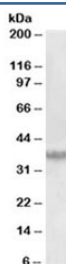


Clusterin Antibody / Apolipoprotein J / APO-J (R34400)

Catalog No.	Formulation	Size
R34400-100UG	0.5 mg/ml in 1X TBS, pH7.3, with 0.5% BSA (US sourced) and 0.02% sodium azide	100 ug

[Bulk quote request](#)

Availability	1-3 business days
Species Reactivity	Human
Format	Antigen affinity purified
Clonality	Polyclonal (goat origin)
Isotype	Goat Ig
Purity	Antigen affinity
Gene ID	1191
Applications	Western Blot : 0.03-0.1ug/ml ELISA (peptide) LOD : 1:64000
Limitations	This Clusterin antibody is available for research use only.



Western blot testing of human prostate lysate with Clusterin antibody at 0.03ug/ml. Predicted molecular weight: 75-80kDa (heterodimer precursor), 36-39kDa (alpha subunit), 34-36kDa (beta subunit).

Description

Additional name(s) for this target protein: CLU, APOJ, apolipoprotein J, CLI, complement cytolysis inhibitor, KUB1

Application Notes

Optimal dilution of the Clusterin antibody should be determined by the researcher.

Immunogen

Amino acids KEIQNAVNGVKQIKT were used as the immunogen for this Clusterin antibody.

Storage

Aliquot and store the Clusterin antibody at -20oC.