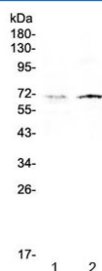


CLPX Antibody / Caseinolytic protease X (RQ4230)

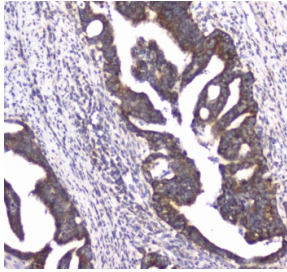
Catalog No.	Formulation	Size
RQ4230	0.5mg/ml if reconstituted with 0.2ml sterile DI water	100 ug

Bulk quote request

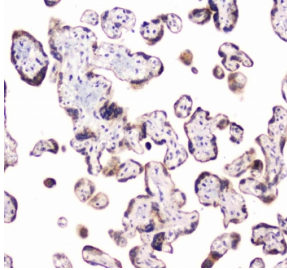
Availability	1-3 business days
Species Reactivity	Human, Mouse
Format	Antigen affinity purified
Clonality	Polyclonal (rabbit origin)
Isotype	Rabbit IgG
Purity	Antigen affinity
Buffer	Lyophilized from 1X PBS with 2% Trehalose and 0.025% sodium azide
UniProt	O76031
Localization	Cytoplasmic, nuclear
Applications	Western Blot : 0.5-1ug/ml Flow Cytometry : 1-3ug/million cells Immunohistochemistry (FFPE) : 1-2ug/ml Immunofluorescence : 2-4ug/ml Direct ELISA : 0.1-0.5ug/ml
Limitations	This CLPX antibody is available for research use only.



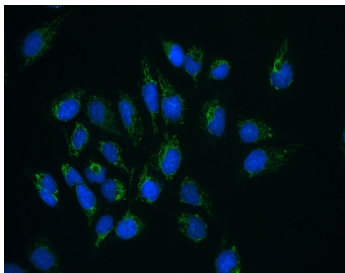
Western blot testing of human 1) HeLa and 2) HepG2 cell lysate with CLPX antibody at 0.5ug/ml. Predicted molecular weight ~69 kDa.



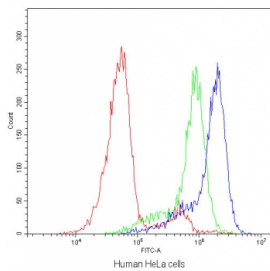
IHC testing of FFPE human rectal cancer tissue with CLPX antibody at 1ug/ml. Required HIER: steam section in pH6 citrate buffer for 20 min and allow to cool prior to staining.



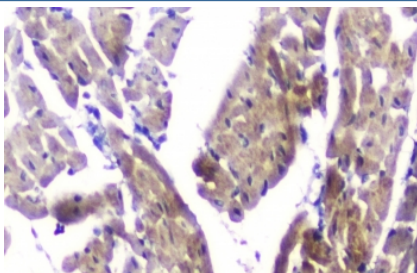
IHC testing of FFPE human placental tissue with CLPX antibody at 1ug/ml. Required HIER: steam section in pH6 citrate buffer for 20 min and allow to cool prior to staining.



Immunofluorescent staining of FFPE human U-2 OS cells with CLPX antibody (green) at 2ug/ml and DAPI nuclear stain (blue). HIER: steam section in pH6 citrate buffer for 20 min.



Flow cytometry testing of human HeLa cells with CLPX antibody at 1ug/10⁶ cells (blocked with goat sera); Red=cells alone, Green=isotype control, Blue=CLPX antibody.



IHC staining of FFPE mouse heart with CLPX antibody at 1ug/ml. HIER: boil tissue sections in pH6, 10mM citrate buffer, for 10-20 min and allow to cool before testing.

Description

ATP-dependent Clp protease ATP-binding subunit clpX-like, mitochondrial is an enzyme that in humans is encoded by the CLPX gene. This protein is a member of the family of AAA Proteins (AAA+ ATPase) and is to form the protein complex of Clp protease. The protein encoded by this gene is part of a protease found in mitochondria. This protease is ATP-dependent and targets specific proteins for degradation. The protease consists of two heptameric rings of the CLPP catalytic subunit sandwiched between two hexameric rings of the chaperone subunit encoded by this gene. Targeted proteins are unwound by this protein and then passed on to the CLPP subunit for degradation. Two transcript variants, one protein-coding and the other non-protein coding, have been found for this gene.

Application Notes

Optimal dilution of the CLPX antibody should be determined by the researcher.

Immunogen

A recombinant human protein corresponding to amino acids A337-E574 was used as the immunogen for the CLPX antibody.

Storage

After reconstitution, the CLPX antibody can be stored for up to one month at 4oC. For long-term, aliquot and store at -20oC. Avoid repeated freezing and thawing.