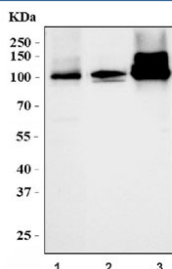


## Clgn Antibody / Calmegin (RQ6851)

| Catalog No. | Formulation   | Size   |
|-------------|---|--------|
| RQ6851      | 0.5mg/ml if reconstituted with 0.2ml sterile DI water | 100 ug |

**Bulk quote request**

|                           |  |
|---------------------------|--|
| <b>Availability</b>       | 1-3 business days                                      |
| <b>Species Reactivity</b> | Mouse, Rat   |
| <b>Format</b>             | Antigen affinity purified                              |
| <b>Clonality</b>          | Polyclonal (rabbit origin)                             |
| <b>Isotype</b>            | Rabbit IgG   |
| <b>Purity</b>             | Antigen affinity purified                              |
| <b>Buffer</b>             | Lyophilized from 1X PBS with 2% Trehalose              |
| <b>UniProt</b>            | P52194   |
| <b>Localization</b>       | Cytoplasmic (ER)                                       |
| <b>Applications</b>       | Western Blot : 1-2ug/ml<br>Direct ELISA : 0.1-0.5ug/ml |
| <b>Limitations</b>        | This Clgn antibody is available for research use only. |



Western blot testing of 1) rat testis, 2) rat H9c2(2-1) cells and 3) mouse testis tissue lysate with Clgn antibody. Predicted molecular weight ~70 kDa but can be observed at ~93 kDa with an ~101 kDa phosphorylated form.

## Description

Calmegin, also known as CLGN, is a protein which in humans is encoded by the CLGN gene. This gene belongs to the calreticulin family, which includes calreticulin, calnexin, and calmegin, and encodes a calcium-binding molecular chaperone specifically expressed in pachytene stage male germ cells. It is required for the proper folding of newly synthesized membrane proteins in the endoplasmic reticulum including those critical for sperm migration from the uterus into the oviduct and sperm adhesion to and penetration of the zona pellucida. This gene plays a key role in spermatogenesis and male infertility. Alternative splice variants exist for this gene.

## Application Notes

Optimal dilution of the Clgn antibody should be determined by the researcher.

## Immunogen

Recombinant mouse protein (amino acids N18-D611) was used as the immunogen for the Clgn antibody.

## Storage

After reconstitution, the Clgn antibody can be stored for up to one month at 4oC. For long-term, aliquot and store at -20oC. Avoid repeated freezing and thawing.