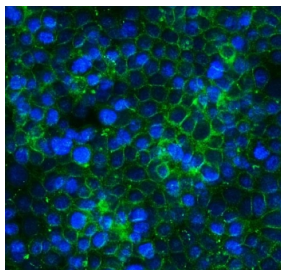


## CLDN3 Antibody / Claudin 3 (RQ5713)

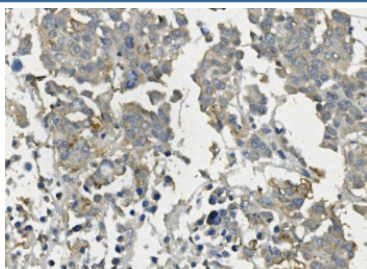
Catalog No.	Formulation	Size
RQ5713	0.5mg/ml if reconstituted with 0.2ml sterile DI water	100 ug

**Bulk quote request**

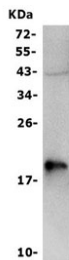
<b>Availability</b>	1-3 business days
<b>Species Reactivity</b>	Human
<b>Format</b>	Antigen affinity purified
<b>Clonality</b>	Polyclonal
<b>Isotype</b>	Rabbit IgG
<b>Purity</b>	Affinity purified
<b>Buffer</b>	Lyophilized from 1X PBS with 2% Trehalose and 0.025% sodium azide
<b>UniProt</b>	O15551
<b>Applications</b>	Western Blot : 0.5-1ug/ml Immunohistochemistry : 1-2ug/ml Immunofluorescence : 2-4ug/ml Flow Cytometry : 1-3ug/million cells
<b>Limitations</b>	This CLDN3 antibody is available for research use only.



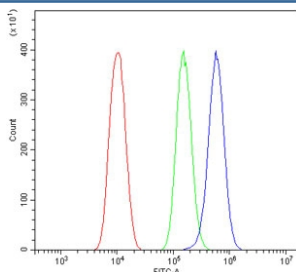
Immunofluorescent staining of FFPE human MCF7 cells with CLDN3 antibody (green) and DAPI nuclear stain (blue). HIER: steam section in pH6 citrate buffer for 20 min.



IHC staining of FFPE human pancreatic cancer with CLDN3 antibody. HIER: boil tissue sections in pH8 EDTA for 20 min and allow to cool before testing.



Western blot testing of human Caco-2 cell lysate with CLDN3 antibody. Predicted molecular weight ~23 kDa.



Flow cytometry testing of human PC-3 cells with CLDN3 antibody at 1ug/million cells (blocked with goat sera); Red=cells alone, Green=isotype control, Blue= CLDN3 antibody.

## Description

Claudin 3, also known as CLDN3, is a protein which in humans is encoded by the CLDN3 gene. Tight junctions represent one mode of cell-to-cell adhesion in epithelial or endothelial cell sheets, forming continuous seals around cells and serving as a physical barrier to prevent solutes and water from passing freely through the paracellular space. These junctions are comprised of sets of continuous networking strands in the outwardly facing cytoplasmic leaflet, with complementary grooves in the inwardly facing extracytoplasmic leaflet. The protein encoded by this intronless gene, a member of the claudin family, is an integral membrane protein and a component of tight junction strands. It is also a low-affinity receptor for *Clostridium perfringens* enterotoxin, and shares aa sequence similarity with a putative apoptosis-related protein found in rat.

## Application Notes

Optimal dilution of the CLDN3 antibody should be determined by the researcher.

## Immunogen

Amino acids REKKYTATKVVYSAPRST from the human protein were used as the immunogen for the CLDN3 antibody.

## Storage

After reconstitution, the CLDN3 antibody can be stored for up to one month at 4°C. For long-term, aliquot and store at -20°C. Avoid repeated freezing and thawing.