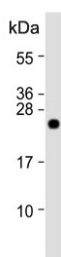


## CLDN2 Antibody / Claudin 2 (F54654)

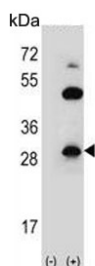
Catalog No.	Formulation	Size
F54654-0.4ML	In 1X PBS, pH 7.4, with 0.09% sodium azide	0.4 ml
F54654-0.08ML	In 1X PBS, pH 7.4, with 0.09% sodium azide	0.08 ml

[Bulk quote request](#)

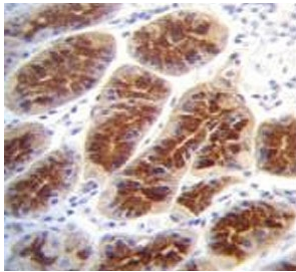
<b>Availability</b>	1-3 business days
<b>Species Reactivity</b>	Human
<b>Format</b>	Purified
<b>Clonality</b>	Polyclonal (rabbit origin)
<b>Isotype</b>	Rabbit Ig
<b>Purity</b>	Antigen affinity purified
<b>UniProt</b>	P57739
<b>Applications</b>	Flow Cytometry : 1:25 (1x10 <sup>6</sup> cells) Immunohistochemistry (FFPE) : 1:25 Western Blot : 1:500-1:2000
<b>Limitations</b>	This CLDN2 antibody is available for research use only.



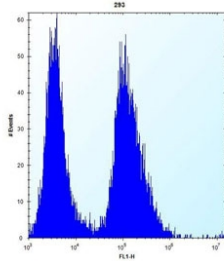
Western blot testing of human heart tissue lysate with CLDN2 antibody. Predicted molecular weight ~25 kDa.



Western blot testing of 1) non-transfected and 2) transfected 293 cell lysate with CLDN2 antibody. Predicted molecular weight ~25 kDa.



IHC testing of FFPE human stomach tissue with CLDN2 antibody. HIER: steam section in pH6 citrate buffer for 20 min and allow to cool prior to staining.



Flow cytometry testing of human HEK293 cells with CLDN2 antibody; Left=isotype control, Right= CLDN2 antibody.

## Description

This gene product belongs to the claudin protein family whose members have been identified as major integral membrane proteins localized exclusively at tight junctions. Claudins are expressed in an organ-specific manner and regulate tissue-specific physiologic properties of tight junctions. This protein is expressed in the intestine. Alternatively spliced transcript variants with different 5' untranslated region have been found for this gene.

## Application Notes

The stated application concentrations are suggested starting points. Titration of the CLDN2 antibody may be required due to differences in protocols and secondary/substrate sensitivity.

## Immunogen

A portion of amino acids 200-227 from the human protein was used as the immunogen for the CLDN2 antibody.

## Storage

Aliquot the CLDN2 antibody and store frozen at -20oC or colder. Avoid repeated freeze-thaw cycles.