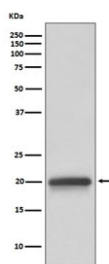


Claudin 5 Antibody / CLDN5 [clone AAHA-3] (RQ4696)

Catalog No.	Formulation	Size
RQ4696	Antibody in PBS with 0.02% sodium azide, 50% glycerol and 0.4-0.5mg/ml BSA	100 ul

[Bulk quote request](#)

Availability	1-2 weeks
Species Reactivity	Human
Format	Purified
Clonality	Rabbit Monoclonal
Isotype	Rabbit IgG
Clone Name	AAHA-3
Purity	Affinity purified
UniProt	O00501
Applications	Western Blot : 1:500-1:2000
Limitations	This Claudin 5 antibody is available for research use only.



Western blot testing of human fetal brain lysate with Claudin 5 antibody. Predicted molecular weight ~23 kDa.

Description

The CLDN5 gene encodes a member of the claudin family. Claudins are integral membrane proteins and components of tight junction strands. Tight junction strands serve as a physical barrier to prevent solutes and water from passing freely through the paracellular space between epithelial or endothelial cell sheets. Mutations in this gene have been found in patients with velocardiofacial syndrome. [RefSeq]

Application Notes

Optimal dilution of the Claudin 5 antibody should be determined by the researcher.

Immunogen

A synthetic peptide specific to human Claudin 5 / CLDN5 was used as the immunogen for the Claudin 5 antibody.

Storage

Store the Claudin 5 antibody at -20oC.