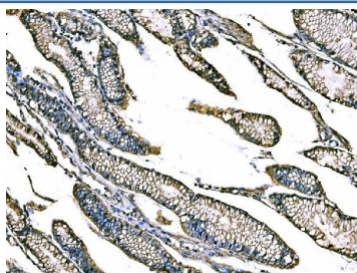


Claudin 18 Antibody / CLDN18 (RQ6848)

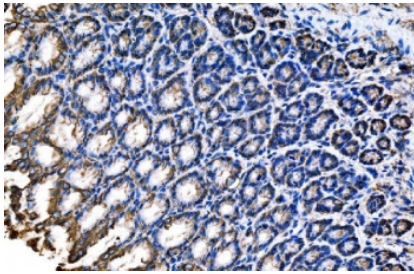
Catalog No.	Formulation	Size
RQ6848	0.5mg/ml if reconstituted with 0.2ml sterile DI water	100 ug

Bulk quote request

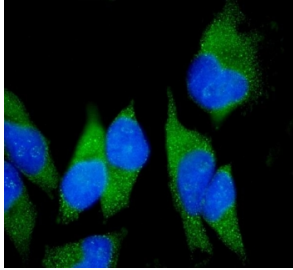
Availability	1-3 business days
Species Reactivity	Human, Rat
Format	Antigen affinity purified
Clonality	Polyclonal (rabbit origin)
Isotype	Rabbit IgG
Purity	Antigen affinity purified
Buffer	Lyophilized from 1X PBS with 2% Trehalose
UniProt	P56856
Localization	Cell membrane, cell junction
Applications	Western Blot : 1-2ug/ml Immunohistochemistry (FFPE) : 2-5ug/ml Immunofluorescence (FFPE) : 5ug/ml Flow Cytometry : 1-3ug/million cells Direct ELISA : 0.1-0.5ug/ml
Limitations	This Claudin 18 antibody is available for research use only.



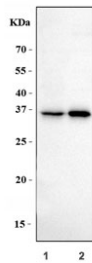
IHC staining of FFPE human gastric cancer tissue with Claudin 18 antibody. HIER: boil tissue sections in pH8 EDTA for 20 min and allow to cool before testing.



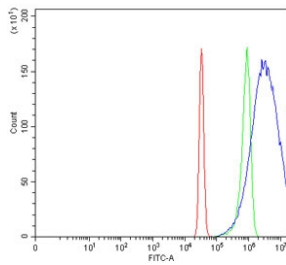
IHC staining of FFPE rat stomach tissue with Claudin 18 antibody. HIER: boil tissue sections in pH8 EDTA for 20 min and allow to cool before testing.



Immunofluorescent staining of FFPE human HeLa cells with Claudin 18 antibody (green) and DAPI nuclear stain (blue). HIER: steam section in pH6 citrate buffer for 20 min.



Western blot testing of human 1) HeLa and 2) HACAT cell lysate with Claudin 18 antibody. Predicted molecular weight ~30 kDa.



Flow cytometry testing of human HeLa cells with Claudin 18 antibody at 1 ug/million cells (blocked with goat sera); Red=cells alone, Green=isotype control, Blue= Claudin 18 antibody.

Description

Claudin-18 is a protein that in humans is encoded by the CLDN18 gene. This gene encodes a member of the claudin family. Claudins are integral membrane proteins and components of tight junction strands. Tight junction strands serve as a physical barrier to prevent solutes and water from passing freely through the paracellular space between epithelial or endothelial cell sheets, and also play critical roles in maintaining cell polarity and signal transductions. This gene is upregulated in patients with ulcerative colitis and highly overexpressed in infiltrating ductal adenocarcinomas. PKC/MAPK/AP-1 (protein kinase C/mitogen-activated protein kinase/activator protein-1) dependent pathway regulates the expression of this gene in gastric cells. Alternatively spliced transcript variants encoding different isoforms have been identified.

Application Notes

Optimal dilution of the Claudin 18 antibody should be determined by the researcher.

Immunogen

Recombinant human protein (amino acids S31-V261) was used as the immunogen for the Claudin 18 antibody.

Storage

After reconstitution, the Claudin 18 antibody can be stored for up to one month at 4°C. For long-term, aliquot and store at -20°C. Avoid repeated freezing and thawing.