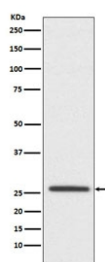


Claudin 11 Antibody / CLDN11 [clone AEDI-3] (RQ4785)

Catalog No.	Formulation	Size
RQ4785	Antibody in PBS with 0.02% sodium azide, 50% glycerol and 0.4-0.5mg/ml BSA	100 ul

[Bulk quote request](#)

Availability	1-2 weeks
Species Reactivity	Human, Mouse, Rat
Format	Purified
Clonality	Rabbit Monoclonal
Isotype	Rabbit IgG
Clone Name	AEDI-3
Purity	Affinity purified
UniProt	O75508
Applications	Western Blot : 1:500-1:2000
Limitations	This Claudin 11 antibody is available for research use only.



Western blot testing of human SH-SY5Y cell lysate with Claudin 11 antibody. Predicted molecular weight ~22 kDa.

Description

Claudin 11 plays a major role in tight junction-specific obliteration of the intercellular space, through calcium-independent cell-adhesion activity. [UniProt]

Application Notes

Optimal dilution of the Claudin 11 antibody should be determined by the researcher.

Immunogen

A synthetic peptide specific to human Claudin 11 / CLDN11 was used as the immunogen for the Claudin 11 antibody.

Storage

Store the Claudin 11 antibody at -20oC.