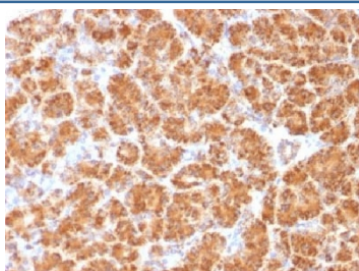


Clathrin Light Chain Antibody [clone CLC/1421] (V3299)

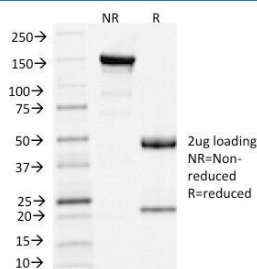
Catalog No.	Formulation	Size
V3299-100UG	0.2 mg/ml in 1X PBS with 0.1 mg/ml BSA (US sourced) and 0.05% sodium azide	100 ug
V3299-20UG	0.2 mg/ml in 1X PBS with 0.1 mg/ml BSA (US sourced) and 0.05% sodium azide	20 ug
V3299SAF-100UG	1 mg/ml in 1X PBS; BSA free, sodium azide free	100 ug

Bulk quote request

Availability	1-3 business days
Species Reactivity	Human
Format	Purified
Clonality	Monoclonal (mouse origin)
Isotype	Mouse IgG2b, kappa
Clone Name	CLC/1421
Purity	Protein G affinity chromatography
UniProt	P09496, P09497
Localization	Cytoplasmic
Applications	Immunohistochemistry (FFPE) : 0.5-1ug/ml for 30 min at RT
Limitations	This Clathrin Light Chain antibody is available for research use only.



IHC testing of FFPE human pancreas with Clathrin Light Chain antibody (clone CLC/1421). Required HIER: boil tissue sections in 10mM Citrate buffer, pH 6.0, for 10-20 min.



SDS-PAGE Analysis of Purified, BSA-Free Clathrin Light Chain Antibody (clone CLC/1421). Confirmation of Integrity and Purity of the Antibody.

Description

Recognizes proteins of 31-44kDa, which are identified as Clathrin Light Chains (both A & B). Clathrin is composed of three heavy chains and three light chains, which associate non-covalently to form a triskelion structure. Clathrin light chain regulates the self-assembly of triskelions onto intracellular membranes. Clathrin light chain subunits (LCA and LCB) contribute to regulation of coated vesicle formation to sort proteins during receptor-mediated endocytosis and organelle biogenesis. LCA and LCB are encoded by two discrete genes. They share only 60% homology, and have certain features in common. Both LCA and LCB undergo alternative mRNA splicing, which results in the generation of tissue-specific isoforms.

Application Notes

Optimal dilution of the Clathrin Light Chain antibody should be determined by the researcher.

Immunogen

A recombinant N-terminal protein fragment from human Clathrin light chain was used as the immunogen for the Clathrin Light Chain antibody.

Storage

Store the Clathrin Light Chain antibody at 2-8°C (with azide) or aliquot and store at -20°C or colder (without azide).