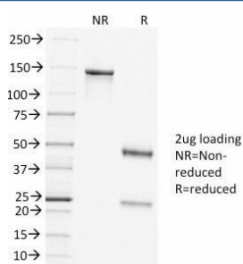


## Clathrin Heavy Chain Antibody [clone CLTC/1431] (V3298)

Catalog No.	Formulation	Size
V3298-100UG	0.2 mg/ml in 1X PBS with 0.1 mg/ml BSA (US sourced) and 0.05% sodium azide	100 ug
V3298-20UG	0.2 mg/ml in 1X PBS with 0.1 mg/ml BSA (US sourced) and 0.05% sodium azide	20 ug
V3298SAF-100UG	1 mg/ml in 1X PBS; BSA free, sodium azide free	100 ug

**Bulk quote request**

<b>Availability</b>	1-2 business days
<b>Species Reactivity</b>	Human
<b>Format</b>	Purified
<b>Clonality</b>	Monoclonal (mouse origin)
<b>Isotype</b>	Mouse IgG1, kappa
<b>Clone Name</b>	CLTC/1431
<b>Purity</b>	Protein G affinity chromatography
<b>UniProt</b>	P53675, Q00610
<b>Localization</b>	Cytoplasmic
<b>Applications</b>	ELISA (order BSA/sodium Azide-free Format For Coating) :
<b>Limitations</b>	This Clathrin Heavy Chain antibody is available for research use only.



SDS-PAGE Analysis of Purified, BSA-Free Clathrin Heavy Chain Antibody (clone CLTC/1431). Confirmation of Integrity and Purity of the Antibody.

## Description

Recognizes protein of 192kDa, which is identified as Clathrin Heavy Chain. Clathrin is composed of three heavy chains and three light chains, which associate non-covalently to form a triskelion structure. Clathrin heavy chain (HC) is

composed of a terminal globular domain, a distal segment and a proximal segment containing a light chain-binding site. The proximal segment of the Clathrin HC protein is essential for interactions between Clathrin heavy chains and light chains, which result in the formation of the triskelion structure.

## **Application Notes**

Optimal dilution of the Clathrin Heavy Chain antibody should be determined by the researcher.

## **Immunogen**

A recombinant N-terminal protein fragment from human Clathrin heavy chain was used as the immunogen for the Clathrin Heavy Chain antibody.

## **Storage**

Store the Clathrin Heavy Chain antibody at 2-8oC (with azide) or aliquot and store at -20oC or colder (without azide).