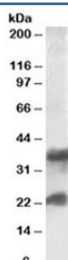


Clatherin Light Chain Antibody (LCA/LCB) (R33209)

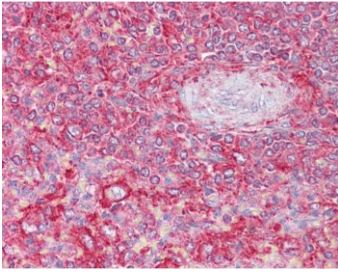
Catalog No.	Formulation	Size
R33209-100UG	0.5 mg/ml in 1X TBS, pH7.3, with 0.5% BSA (US sourced) and 0.02% sodium azide	100 ug

[Bulk quote request](#)

Availability	1-3 business days
Species Reactivity	Human
Predicted Reactivity	Mouse, Rat, Dog, Cow
Format	Antigen affinity purified
Clonality	Polyclonal (goat origin)
Isotype	Goat Ig
Purity	Antigen affinity
Gene ID	1211; 1212
Localization	Cytoplasmic
Applications	Western Blot : 0.1-0.3ug/ml IHC (FFPE) : 2.5ug/ml ELISA (peptide) LOD : 1:32000
Limitations	This Clatherin Light Chain antibody is available for research use only.



Western blot testing of human frontal cortex lysate with Clatherin Light Chain antibody at 0.1ug/ml. The expected molecular weight is 17~27 kDa. A ~35kDa band has also been reported (PMID: 10942733).



IHC testing of FFPE human spleen tissue with Clatherin Light Chain antibody at 2.5ug/ml. Required HIER: steamed antigen retrieval with pH6 citrate buffer; AP-staining.

Description

Additional name(s) for this target protein: Clathrin light chain; CLTA, CLTB; LCA; LCB

Application Notes

Optimal dilution of the Clatherin Light Chain antibody should be determined by the researcher.

1. This Ab will detected all reported isoforms of Clathrin light chains A and B.

Immunogen

Amino acids CDFNPKSSKQAKD were used as the immunogen for this Clatherin Light Chain antibody. This sequence is shared by LCA and LCB. (1)

Storage

Aliquot and store the Clatherin Light Chain antibody at -20oC.