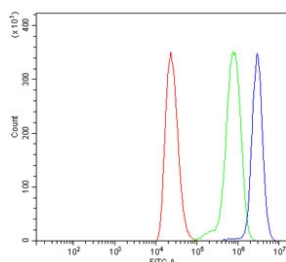


CLASP2 Antibody / CLIP-associating protein 2 (RQ6607)

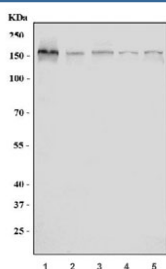
Catalog No.	Formulation	Size
RQ6607	0.5mg/ml if reconstituted with 0.2ml sterile DI water	100 ug

Bulk quote request

Availability	1-3 business days
Species Reactivity	Human, Mouse, Rat
Format	Antigen affinity purified
Clonality	Polyclonal (rabbit origin)
Isotype	Rabbit IgG
Purity	Antigen affinity purified
Buffer	Lyophilized from 1X PBS with 2% Trehalose
UniProt	O75122
Applications	Western Blot : 1-2ug/ml Flow Cytometry : 1-3ug/million cells Direct ELISA : 0.1-0.5ug/ml
Limitations	This CLASP2 antibody is available for research use only.



Flow cytometry testing of human ThP-1 cells with CLASP2 antibody at 1ug/million cells (blocked with goat sera); Red=cells alone, Green=isotype control, Blue= CLASP2 antibody.



Western blot testing of 1) human HEK293, 2) human SH-SY5Y, 3) human HL60, 4) rat brain and 5) mouse brain tissue lysate with CLASP2 antibody. Expected molecular weight: 140-160 kDa.

Description

CLASP2 (CLIP-associating protein 2) is a brain specific protein belongs to CLASP family. CLASP1 and CLASP2 regulate microtubule plus-end dynamics in brain cortex. CLASP2 is required for the orientation of stabilized microtubules toward the leading edge, It may act at the cell cortex to enhance the frequency of rescue of depolymerizing microtubules by attaching their plus-ends to cortical platforms. Phosphorylation of CLASP2 by GSK3B may negatively regulate binding to microtubule lattices in lamella.

Application Notes

Optimal dilution of the CLASP2 antibody should be determined by the researcher.

Immunogen

Recombinant human protein (amino acids A266-D1230) was used as the immunogen for the CLASP2 antibody.

Storage

After reconstitution, the CLASP2 antibody can be stored for up to one month at 4°C. For long-term, aliquot and store at -20°C. Avoid repeated freezing and thawing.