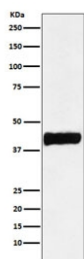


CKB Antibody / Creatine kinase B [clone AFOC-3] (RQ5384)

Catalog No.	Formulation	Size
RQ5384	Antibody in PBS with 0.02% sodium azide, 50% glycerol and 0.4-0.5mg/ml BSA	100 ul

[Bulk quote request](#)

Availability	1-2 weeks
Species Reactivity	Human, Mouse, Rat
Format	Purified
Clonality	Rabbit Monoclonal
Isotype	Rabbit IgG
Clone Name	AFOC-3
Purity	Affinity purified
UniProt	P12277
Applications	Western Blot : 1:1000-1:5000
Limitations	This CKB antibody is available for research use only.



Western blot testing of human SH-SY5Y cell lysate with CKB antibody. Predicted molecular weight ~43 kDa.

Description

The protein encoded by the CKB gene is a cytoplasmic enzyme involved in energy homeostasis. The encoded protein reversibly catalyzes the transfer of phosphate between ATP and various phosphogens such as creatine phosphate. It acts as a homodimer in brain as well as in other tissues, and as a heterodimer with a similar muscle isozyme in heart. The encoded protein is a member of the ATP:guanido phosphotransferase protein family. [RefSeq]

Application Notes

Optimal dilution of the CKB antibody should be determined by the researcher.

Immunogen

A synthetic peptide specific to human Creatine kinase B was used as the immunogen for the CKB antibody.

Storage

Store the CKB antibody at -20oC.