

## CK18 Antibody / Cytokeratin 18 [clone B23.1] (V2677)

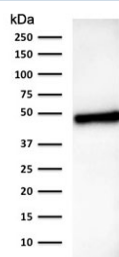
Catalog No.	Formulation	Size
V2677-100UG	0.2 mg/ml in 1X PBS with 0.1 mg/ml BSA (US sourced) and 0.05% sodium azide	100 ug
V2677-20UG	0.2 mg/ml in 1X PBS with 0.1 mg/ml BSA (US sourced) and 0.05% sodium azide	20 ug
V2677SAF-100UG	1 mg/ml in 1X PBS; BSA free, sodium azide free	100 ug
V2677IHC-7ML	Prediluted in 1X PBS with 0.1 mg/ml BSA (US sourced) and 0.05% sodium azide; *For IHC use only*	7 ml



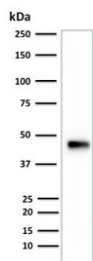
Citations (3)

[Bulk quote request](#)

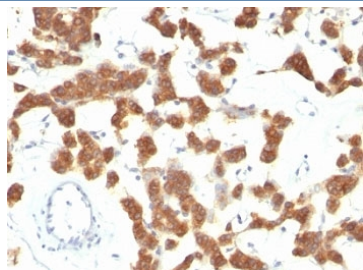
Availability	1-3 business days
Species Reactivity	Human
Format	Purified
Clonality	Monoclonal (mouse origin)
Isotype	Mouse IgG1, kappa
Clone Name	B23.1
Purity	Protein G affinity chromatography
UniProt	P05783
Localization	Cytoplasmic
Applications	Western Blot : 1-2ug/ml Immunohistochemistry (FFPE) : 1-2ug/ml for 30 min at RT (1) (2)
Limitations	This CK18 antibody is available for research use only.



Western blot testing of human stomach lysate with CK18 antibody (clone B23.1).  
Expected molecular weight: 46-50 kDa.



Western blot testing of human HCT-116 cell lysate with CK18 antibody (clone B23.1).  
Expected molecular weight: 46-50 kDa.



IHC analysis of formalin-fixed, paraffin-embedded human thyroid carcinoma stained with CK18 antibody (clone B23.1).

## Description

This mAb reacts with a wide variety of simple epithelia. It does not react with stratified squamous epithelia. It reacts with epithelial tumors of the gastrointestinal tract, lung, breast, pancreas, ovary, and thyroid. Cytokeratin 18, which belongs to the type A (acidic) subfamily of low molecular weight keratins, exists in combination with cytokeratin 8. It is reported that tissues from gastrointestinal tract are positive for both cytokeratin 8 and 18 but do not contain cytokeratin 14. Tissues from gastrointestinal tract, respiratory tract and urogenital tract, as well as endocrine and exocrine tissues and mesothelial cells are positive for cytokeratin 18.

## Application Notes

Optimal dilution of the CK18 antibody should be determined by the researcher.

1. Staining of formalin-fixed tissues requires boiling tissue sections in pH 9 10mM Tris with 1mM EDTA for 10-20 min followed by cooling at RT for 20 min
2. The prediluted format is supplied in a dropper bottle and is optimized for use in IHC. After epitope retrieval step (if required), drip mAb solution onto the tissue section and incubate at RT for 30 min.

## Immunogen

PMC-42 human breast carcinoma cells were used as the immunogen for the CK18 antibody.

## Storage

Store the CK18 antibody at 2-8°C (with azide) or aliquot and store at -20°C or colder (without azide).

