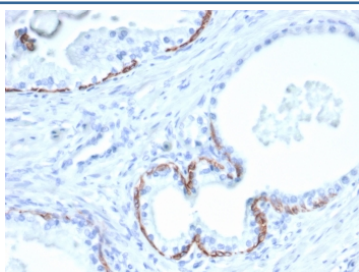


CK10 Antibody / Cytokeratin 10 / KRT10 [clone KRT10/6961] (V4474)

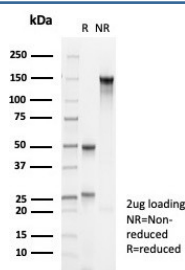
Catalog No.	Formulation	Size
V4474-100UG	0.2 mg/ml in 1X PBS with 0.1 mg/ml BSA (US sourced), 0.05% sodium azide	100 ug
V4474-20UG	0.2 mg/ml in 1X PBS with 0.1 mg/ml BSA (US sourced), 0.05% sodium azide	20 ug
V4474SAF-100UG	1 mg/ml in 1X PBS; BSA free, sodium azide free	100 ug

[Bulk quote request](#)

Availability	1-3 business days
Species Reactivity	Human
Format	Purified
Clonality	Monoclonal (mouse origin)
Isotype	Mouse IgG1, kappa
Clone Name	KRT10/6961
Purity	Protein A/G affinity
UniProt	P13645
Localization	Cytoplasm
Applications	Immunohistochemistry (FFPE) : 1-2ug/ml for 30 minutes at RT
Limitations	This CK10 antibody is available for research use only.



IHC staining of FFPE human prostate tissue with CK10 antibody (clone KRT10/6961).
 HIER: boil tissue sections in pH 9 10mM Tris with 1mM EDTA for 20 min and allow to cool before testing.



SDS-PAGE analysis of purified, BSA-free CK10 antibody (clone KRT10/6961) as confirmation of integrity and purity.

Description

This mAb recognizes a protein of 56.5kDa, identified as cytokeratin 10 (CK10). CK10 is expressed in all suprabasal layers of the epidermis. In the epidermis, expression of CK10 strictly parallels the extent of differentiation; it is absent in the basal layer, appears in the first suprabasal layers and increases in concentration towards the granular layer. However, CK10 is rarely detected in early stages of vulvar squamous carcinomas (tumors less than 2 cm, clinical stage I) regardless of the tumor grade. In larger and more advanced tumors (greater than 2 cm, clinical stages II and III), CK10 is detected very frequently. Expression of CK10 is related to maturation of malignant keratinocytes, being preferentially detected in more differentiated parts.

Application Notes

Optimal dilution of the CK10 antibody should be determined by the researcher.

Immunogen

Recombinant full-length human protein was used as the immunogen for the CK10 antibody.

Storage

Aliquot the CK10 antibody and store frozen at -20oC or colder. Avoid repeated freeze-thaw cycles.