

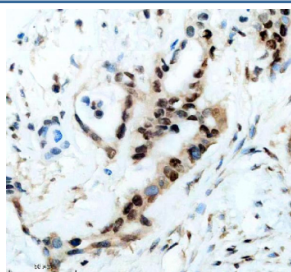
CIRBP Antibody / Cold-inducible RNA-binding protein [clone 26C38] (RQ8908)

Catalog No.	Formulation	Size
RQ8908	Antibody in PBS with 0.02% sodium azide, 50% glycerol and 0.4-0.5mg/ml BSA	100 ul

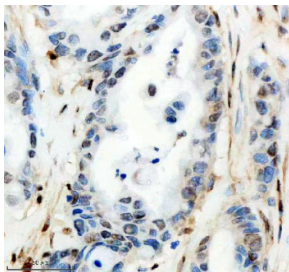
Recombinant **RABBIT MONOCLONAL**

[Bulk quote request](#)

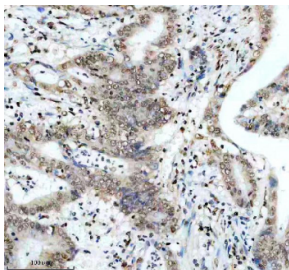
Availability	1-3 days
Species Reactivity	Human
Format	Purified
Clonality	Recombinant Rabbit Monoclonal
Isotype	Rabbit IgG
Clone Name	26C38
Purity	Affinity chromatography
UniProt	Q14011
Localization	Nuclear, cytoplasmic
Applications	Western Blot : 1:500 Immunohistochemistry (FFPE) : 1:50
Limitations	This CIRBP antibody is available for research use only.



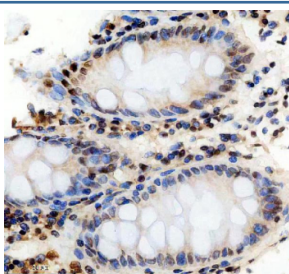
IHC staining of FFPE human pancreas cancer tissue with CIRBP antibody, HRP-secondary and DAB substrate. HIER: boil tissue sections in pH8 EDTA for 20 min and allow to cool before testing.



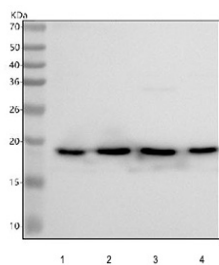
IHC staining of FFPE human pancreas cancer tissue with CIRBP antibody, HRP-secondary and DAB substrate. HIER: boil tissue sections in pH8 EDTA for 20 min and allow to cool before testing.



IHC staining of FFPE human colon cancer tissue with PHF8 antibody, HRP-secondary and DAB substrate. HIER: boil tissue sections in pH8 EDTA for 20 min and allow to cool before testing.



IHC staining of FFPE human colon tissue with PHF8 antibody, HRP-secondary and DAB substrate. HIER: boil tissue sections in pH8 EDTA for 20 min and allow to cool before testing.



Western blot testing of human 1) HepG2, 2) RT4, 3) U-251 and 4) HEL cell lysate with CIRBP antibody. Predicted molecular weight: 19-28 kDa (multiple isoforms).