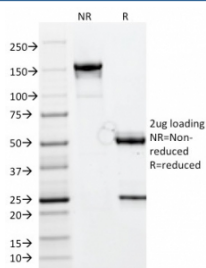


## Chymotrypsin-like elastase family member 3B Antibody / CELA3B / Elastase 3B [clone CELA3B/1811] (V8919)

Catalog No.	Formulation	Size
V8919-100UG	0.2 mg/ml in 1X PBS with 0.1 mg/ml BSA (US sourced), 0.05% sodium azide	100 ug
V8919-20UG	0.2 mg/ml in 1X PBS with 0.1 mg/ml BSA (US sourced), 0.05% sodium azide	20 ug
V8919SAF-100UG	1 mg/ml in 1X PBS; BSA free, sodium azide free	100 ug

[Bulk quote request](#)

<b>Availability</b>	1-3 business days
<b>Species Reactivity</b>	Human
<b>Format</b>	Purified
<b>Clonality</b>	Monoclonal (mouse origin)
<b>Isotype</b>	Mouse IgG1, kappa
<b>Clone Name</b>	CELA3B/1811
<b>Purity</b>	Protein A/G affinity
<b>UniProt</b>	P08861
<b>Localization</b>	Cytoplasmic
<b>Applications</b>	ELISA (order BSA-free Format For Coating) :
<b>Limitations</b>	This Chymotrypsin-like elastase family member 3B antibody is available for research use only.



SDS-PAGE analysis of purified, BSA-free Chymotrypsin-like elastase family member 3B antibody (clone CELA3B/1811) as confirmation of integrity and purity.

## Description

Elastases form a subfamily of serine proteases that hydrolyze many proteins in addition to elastin. Humans have six elastase genes which encode the structurally similar proteins elastase 1, 2, 2A, 2B, 3A, and 3B. Unlike other elastases, elastase 3B has little elastolytic activity. Like most of the human elastases, elastase 3B is secreted from the pancreas as

a zymogen and, like other serine proteases such as trypsin, chymotrypsin and kallikrein; it has a digestive function in the intestine.

## **Application Notes**

Optimal dilution of the Chymotrypsin-like elastase family member 3B antibody should be determined by the researcher.

## **Immunogen**

A portion of amino acids 82-238 was used as the immunogen for the Chymotrypsin-like elastase family member 3B antibody.

## **Storage**

Aliquot the Chymotrypsin-like elastase family member 3B antibody and store frozen at -20oC or colder. Avoid repeated freeze-thaw cycles.