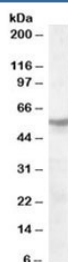


CHRNA1 Antibody (R35251)

Catalog No.	Formulation	Size
R35251-100UG	0.5 mg/ml in 1X TBS, pH7.3, with 0.5% BSA (US sourced) and 0.02% sodium azide	100 ug

[Bulk quote request](#)

Availability	1-3 business days
Species Reactivity	Human
Predicted Reactivity	Cow, Mouse, Rat
Format	Antigen affinity purified
Clonality	Polyclonal (goat origin)
Isotype	Goat Ig
Purity	Antigen affinity
Gene ID	1140
Applications	Western Blot : 1-3ug/ml ELISA (peptide) LOD : 1:1000
Limitations	This CHRNA1 antibody is available for research use only.



Western blot testing of human cerebellum lysate with CHRNA1 antibody at 1 ug/ml.
Predicted molecular weight: ~57kDa.

Description

Additional name(s) for this target protein: Cholinergic receptor, nicotinic, beta 1, ACHRB

Application Notes

Optimal dilution of the CHRNA1 antibody should be determined by the researcher.

Immunogen

Amino acids QEQEDHDALKED were used as the immunogen for this CHRNA1 antibody.

Storage

Aliquot and store the CHRNA1 antibody at -20oC.