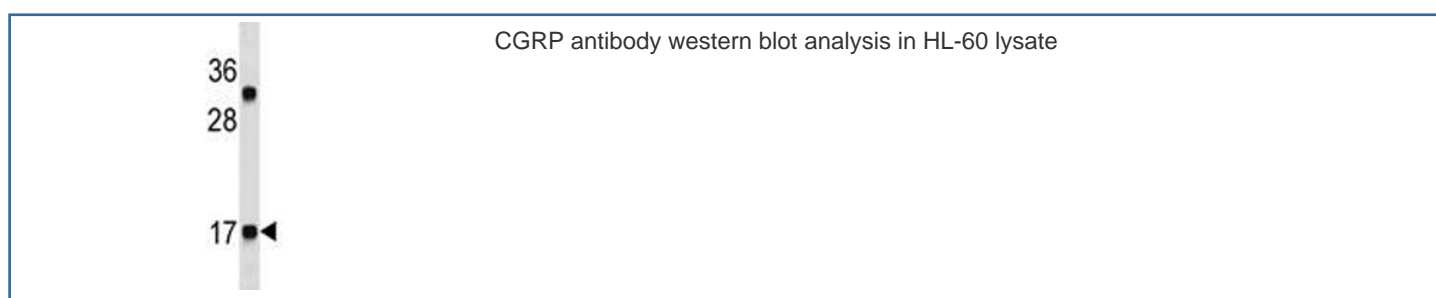


CGRP Antibody / CALCA / Calcitonin [clone 406CT21.4.3] (F53620)

Catalog No.	Formulation	Size
F53620-0.1ML	In ascites with 0.09% sodium azide	0.1 ml

Bulk quote request

Availability	1-3 business days
Species Reactivity	Human
Format	Ascites
Clonality	Monoclonal (mouse origin)
Isotype	Mouse IgM
Clone Name	406CT21.4.3
Purity	Ascites
UniProt	P01258
Localization	Cytoplasmic
Applications	Western Blot : 1:1000-1:8000
Limitations	This CGRP antibody is available for research use only.



Description

This gene encodes the peptide hormones calcitonin, calcitonin gene-related peptide (CGRP) and katacalcin by tissue-specific alternative RNA splicing of the gene transcripts and cleavage of inactive precursor proteins. Calcitonin is involved in calcium regulation and acts to regulate phosphorus metabolism. Calcitonin gene-related peptide functions as a vasodilator while katacalcin is a calcium-lowering peptide. Multiple transcript variants encoding different isoforms have been found for this gene.

Application Notes

Titration of the CGRP antibody may be required due to differences in protocols and secondary/substrate sensitivity.

Immunogen

A portion of amino acids 104-132 from the human protein was used as the immunogen for this CGRP antibody.

Storage

Aliquot the CGRP antibody and store frozen at -20oC or colder. Avoid repeated freeze-thaw cycles.