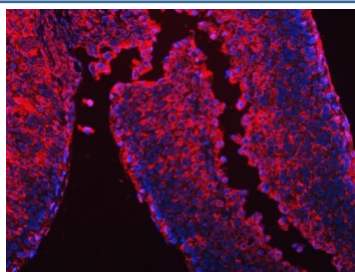


CES2 Antibody / Carboxylesterase 2 (RQ7158)

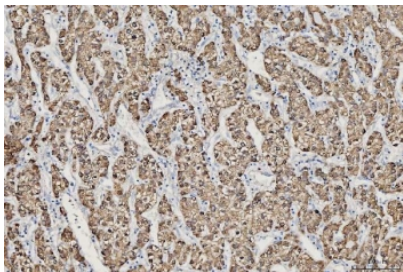
Catalog No.	Formulation	Size
RQ7158	0.5mg/ml if reconstituted with 0.2ml sterile DI water	100 ug

Bulk quote request

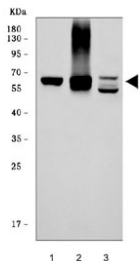
Availability	1-3 business days
Species Reactivity	Human, Mouse
Format	Antigen affinity purified
Clonality	Polyclonal (rabbit origin)
Isotype	Rabbit IgG
Purity	Antigen affinity purified
Buffer	Lyophilized from 1X PBS with 2% Trehalose
UniProt	O00748
Localization	Cytoplasmic
Applications	Western Blot : 0.5-1ug/ml Immunohistochemistry (FFPE) : 2-5ug/ml Immunofluorescence : 5ug/ml Direct ELISA : 0.1-0.5ug/ml
Limitations	This CES2 antibody is available for research use only.



Immunofluorescent staining of FFPE human liver cancer tissue with CES2 antibody (red) and DAPI nuclear stain (blue). HIER: boil tissue sections in pH8 EDTA for 20 min and allow to cool before testing.



IHC staining of FFPE human liver cancer tissue with CES2 antibody. HIER: boil tissue sections in pH8 EDTA for 20 min and allow to cool before testing.



Western blot testing of 1) human HepG2, 2) human HCCP and 3) mouse liver tissue lysate with CES2 antibody. Predicted molecular weight ~62 kDa.

Description

Carboxylesterase 2 is an enzyme that in humans is encoded by the CES2 gene. This gene encodes a member of the carboxylesterase large family. The family members are responsible for the hydrolysis or transesterification of various xenobiotics, such as cocaine and heroin, and endogenous substrates with ester, thioester, or amide bonds. They may participate in fatty acyl and cholesterol ester metabolism, and may play a role in the blood-brain barrier system. The protein encoded by this gene is the major intestinal enzyme and functions in intestine drug clearance. Alternatively spliced transcript variants have been found for this gene.

Application Notes

Optimal dilution of the CES2 antibody should be determined by the researcher.

Immunogen

Recombinant human protein (amino acids Q27-L549) was used as the immunogen for the CES2 antibody.

Storage

After reconstitution, the CES2 antibody can be stored for up to one month at 4°C. For long-term, aliquot and store at -20°C. Avoid repeated freezing and thawing.