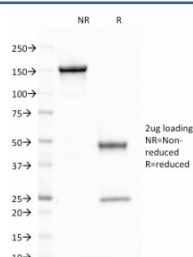


## CELA3B Antibody / Elastase 3B [clone CELA3B/1758] (V8906)

Catalog No.	Formulation	Size
V8906-100UG	0.2 mg/ml in 1X PBS with 0.1 mg/ml BSA (US sourced), 0.05% sodium azide	100 ug
V8906-20UG	0.2 mg/ml in 1X PBS with 0.1 mg/ml BSA (US sourced), 0.05% sodium azide	20 ug
V8906SAF-100UG	1 mg/ml in 1X PBS; BSA free, sodium azide free	100 ug

[Bulk quote request](#)

<b>Availability</b>	1-3 business days
<b>Species Reactivity</b>	Human
<b>Format</b>	Purified
<b>Clonality</b>	Monoclonal (mouse origin)
<b>Isotype</b>	Mouse IgG
<b>Clone Name</b>	CELA3B/1758
<b>Purity</b>	Protein A/G affinity
<b>UniProt</b>	P08861
<b>Localization</b>	Cytoplasmic
<b>Applications</b>	ELISA : 2-4ug/ml (order BSA-free format for coating)
<b>Limitations</b>	This CELA3B antibody is available for research use only.



SDS-PAGE analysis of purified, BSA-free CELA3B antibody (clone CELA3B/1758) as confirmation of integrity and purity.

## Description

Elastases form a subfamily of serine proteases that hydrolyze many proteins in addition to elastin. Humans have six elastase genes which encode the structurally similar proteins elastase 1, 2, 2A, 2B, 3A, and 3B. Unlike other elastases, elastase 3B has little elastolytic activity. Like most of the human elastases, elastase 3B is secreted from the pancreas as a zymogen and, like other serine proteases such as trypsin, chymotrypsin and kallikrein; it has a digestive function in the

intestine. Elastase 3B preferentially cleaves proteins after alanine residues. Elastase 3B may also function in the intestinal transport and metabolism of cholesterol. Both elastase 3A and elastase 3B have been referred to as protease E and as elastase 1, and excretion of this protein in fecal material is frequently used as a measure of pancreatic function.

## **Application Notes**

Optimal dilution of the CELA3B antibody should be determined by the researcher.

## **Immunogen**

A portion of amino acids 82-238 was used as the immunogen for the CELA3B antibody.

## **Storage**

Aliquot the CELA3B antibody and store frozen at -20oC or colder. Avoid repeated freeze-thaw cycles.