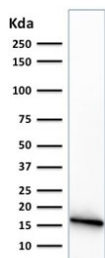


CELA3B Antibody [clone CELA3B/1374] (V8432)

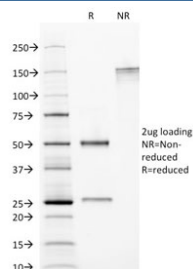
Catalog No.	Formulation	Size
V8432-100UG	0.2 mg/ml in 1X PBS with 0.1 mg/ml BSA (US sourced) and 0.05% sodium azide	100 ug
V8432-20UG	0.2 mg/ml in 1X PBS with 0.1 mg/ml BSA (US sourced) and 0.05% sodium azide	20 ug
V8432SAF-100UG	1 mg/ml in 1X PBS; BSA free, sodium azide free	100 ug

[Bulk quote request](#)

Availability	1-3 business days
Species Reactivity	Human
Format	Purified
Clonality	Monoclonal (mouse origin)
Isotype	Mouse IgG3, kappa
Clone Name	CELA3B/1374
Purity	Protein G affinity chromatography
UniProt	P08861
Localization	Cytoplasmic
Applications	Western Blot : 1-2ug/ml ELISA : 2-4ug/ml; order Ab without BSA for coating
Limitations	This CELA3B antibody is available for research use only.



Western blot testing of human PANC-1 cell lysate with CELA3B antibody (clone CELA3B/1374).



SDS-PAGE analysis of purified, BSA-free CELA3B antibody as confirmation of integrity and purity.

Description

This MAb recognizes a protein of ~30kDa, identified as CELA3B (Chymotrypsin like elastase family member 3B). Elastases form a subfamily of serine proteases that hydrolyze many proteins in addition to elastin. Humans have six elastase genes which encode the structurally similar proteins elastase 1, 2, 2A, 2B, 3A, and 3B. Unlike other elastases, elastase 3B has little elastolytic activity. Like most of the human elastases, elastase 3B is secreted from the pancreas as a zymogen and, like other serine proteases such as trypsin, chymotrypsin and kallikrein; it has a digestive function in the intestine. Elastase 3B preferentially cleaves proteins after alanine residues. Elastase 3B may also function in the intestinal transport and metabolism of cholesterol. Both elastase 3A and elastase 3B have been referred to as protease E and as elastase 1, and excretion of this protein in fecal material is frequently used as a measure of pancreatic function in clinical assays.

Application Notes

Optimal dilution of the CELA3B antibody should be determined by the researcher.

Immunogen

A portion of amino acids 82-238 from the human protein was used as the immunogen for the CELA3B antibody.

Storage

Store the CELA3B antibody at 2-8°C (with azide) or aliquot and store at -20°C or colder (without azide).