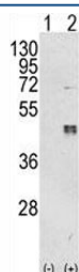


CEBPB Antibody (F49889)

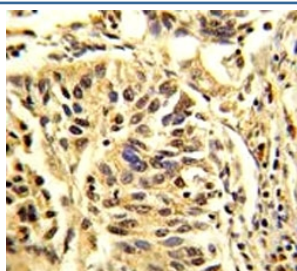
Catalog No.	Formulation	Size
F49889-0.4ML	In 1X PBS, pH 7.4, with 0.09% sodium azide	0.4 ml
F49889-0.08ML	In 1X PBS, pH 7.4, with 0.09% sodium azide	0.08 ml

[Bulk quote request](#)

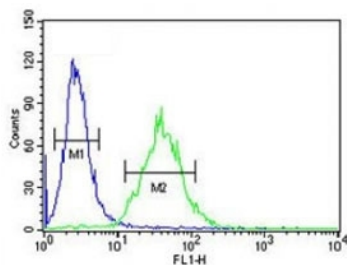
Availability	1-3 business days
Species Reactivity	Human
Predicted Reactivity	Mouse, Rat, Bovine, Chicken
Format	Purified
Clonality	Polyclonal (rabbit origin)
Isotype	Rabbit Ig
Purity	Purified
UniProt	P17676
Applications	Western Blot : 1:1000 IHC (Paraffin) : 1:50-1:100 Flow Cytometry : 1:10-1:50
Limitations	This CEBPB antibody is available for research use only.



Western blot analysis of CEBPB antibody and 293 cell lysate either nontransfected (Lane 1) or transiently transfected with the CEBPB gene (2). Expected molecular weight: 36-41 kDa.



IHC analysis of FFPE human lung carcinoma stained with CEBPB antibody



CEBPB antibody flow cytometric analysis of 293 cells (green) compared to a [negative control](http://search_result.php?search_txt=n1001) (blue). FITC-conjugated goat-anti-rabbit secondary Ab was used for the analysis.

Description

CEBPB is a bZIP transcription factor which can bind as a homodimer to certain DNA regulatory regions. It can also form heterodimers with the related proteins CEBP-alpha, CEBP-delta, and CEBP-gamma. This protein is important in the regulation of genes involved in immune and inflammatory responses and has been shown to bind to the IL-1 response element in the IL-6 gene, as well as to regulatory regions of several acute-phase and cytokine genes. In addition, It can bind the promoter and upstream element and stimulate the expression of the collagen type I gene.

Application Notes

Titration of the CEBPB antibody may be required due to differences in protocols and secondary/substrate sensitivity.

Immunogen

A portion of amino acids 271-298 from the human protein was used as the immunogen for this CEBPB antibody.

Storage

Aliquot the CEBPB antibody and store frozen at -20oC or colder. Avoid repeated freeze-thaw cycles.