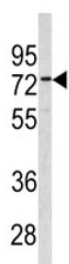


CEA Antibody / CEACAM5 (F49646)

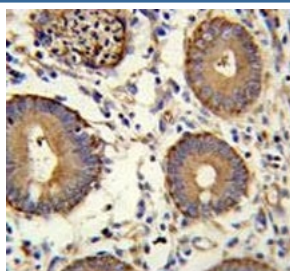
Catalog No.	Formulation	Size
F49646-0.4ML	In 1X PBS, pH 7.4, with 0.09% sodium azide	0.4 ml
F49646-0.08ML	In 1X PBS, pH 7.4, with 0.09% sodium azide	0.08 ml

Bulk quote request

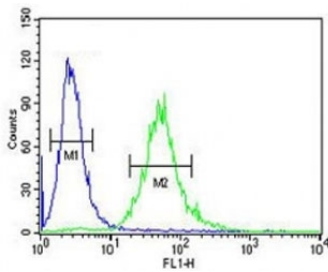
Availability	1-3 business days
Species Reactivity	Human
Format	Purified
Clonality	Polyclonal (rabbit origin)
Isotype	Rabbit Ig
Purity	Purified
UniProt	P06731
Applications	Western Blot : 1:1000 IHC (Paraffin) : 1:50-1:100 Flow Cytometry : 1:10-1:50
Limitations	This CEA antibody is available for research use only.



Western blot analysis of CEA antibody and 293 lysate. Expected molecular weight: 80~200 kDa depending on glycosylation level.



CEA antibody immunohistochemistry analysis in formalin fixed and paraffin embedded human colon carcinoma.



CEA antibody flow cytometric analysis of 293 cells (right histogram) compared to a negative control (left histogram). FITC-conjugated goat-anti-rabbit secondary Ab was used for the analysis.

Description

CEA is a cell surface glycoprotein that plays a role in cell adhesion and in intracellular signaling. It is a receptor for E.coli Dr adhesins.

Application Notes

Titration of the CEA antibody may be required due to differences in protocols and secondary/substrate sensitivity.

Immunogen

A portion of amino acids 400-429 from the human protein was used as the immunogen for this CEA antibody.

Storage

Aliquot the CEA antibody and store frozen at -20oC or colder. Avoid repeated freeze-thaw cycles.