

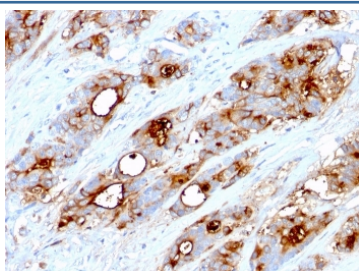
## CEA Antibody / CEACAM5 [clone CEA31] (V2089)

Catalog No.	Formulation	Size
V2089-100UG	0.2 mg/ml in 1X PBS with 0.1 mg/ml BSA (US sourced) and 0.05% sodium azide	100 ug
V2089-20UG	0.2 mg/ml in 1X PBS with 0.1 mg/ml BSA (US sourced) and 0.05% sodium azide	20 ug
V2089SAF-100UG	1 mg/ml in 1X PBS; BSA free, sodium azide free	100 ug
V2089IHC-7ML	Prediluted in 1X PBS with 0.1 mg/ml BSA (US sourced) and 0.05% sodium azide; *For IHC use only*	7 ml

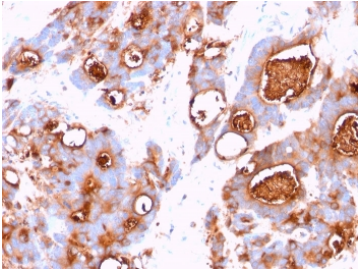
 Citations (11)

[Bulk quote request](#)

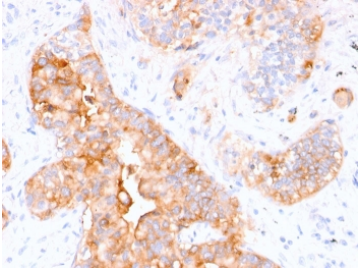
<b>Species Reactivity</b>	Human
<b>Format</b>	Purified
<b>Clonality</b>	Monoclonal (mouse origin)
<b>Isotype</b>	Mouse IgG1, kappa
<b>Clone Name</b>	CEA31
<b>Purity</b>	Protein G affinity chromatography
<b>Buffer</b>	1X PBS, pH 7.4
<b>UniProt</b>	P06731
<b>Localization</b>	Cytoplasmic and luminal surface
<b>Applications</b>	Immunohistochemistry (FFPE) : 0.25-0.5ug/ml for 30 min at RT (1) (2)
<b>Limitations</b>	This <b>CEA antibody</b> is available for research use only.



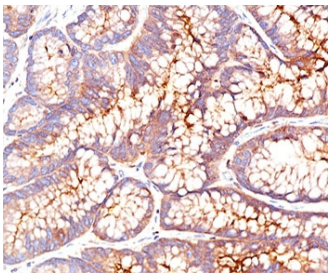
IHC testing of FFPE human colon carcinoma stained with CEA antibody (clone CEA31).



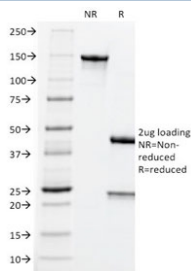
IHC testing of FFPE human colon carcinoma stained with CEA antibody (clone CEA31).



IHC testing of FFPE human colon carcinoma stained with CEA antibody (clone CEA31).



IHC testing of FFPE human colon carcinoma stained with CEA antibody (clone CEA31).



SDS-PAGE analysis of purified, BSA-free CEA antibody (clone CEA31) as confirmation of integrity and purity.

## Description

This antibody recognizes proteins of 80-200kDa, identified as different members of the CEA (Carcinoembryonic Antigen) family. CEA is synthesized during development in the fetal gut and is re-expressed in increased amounts in intestinal carcinomas and several other tumors. This antibody does not react with nonspecific cross-reacting antigen (NCA) and with human polymorphonuclear leucocytes. The antibody shows no reaction with a variety of normal tissues and is suitable for staining of formalin/paraffin tissues. CEA is not found in benign glands, stroma, or malignant prostatic cells. antibody to CEA is useful in detecting early foci of gastric carcinoma and in distinguishing pulmonary adenocarcinomas (60-70% are CEA+) from pleural mesotheliomas (rarely or weakly CEA+). CEA antibody positivity is seen in adenocarcinomas from the lung, colon, stomach, esophagus, pancreas, gallbladder, urachus, salivary gland, ovary, and endocervix.

## Application Notes

The concentration stated for each application is a general starting point. Variations in protocols, secondaries and substrates may require the antibody to be titrated up or down for optimal performance.

1. Staining of formalin-fixed tissues requires boiling tissue sections in pH 9 10mM Tris with 1mM EDTA for 10-20 min followed by cooling at RT for 20 minutes.

2. The prediluted format is supplied in a dropper bottle and is optimized for use in IHC. After epitope retrieval step (if required), drip mAb solution onto the tissue section and incubate at RT for 30 min.

## Immunogen

Human colon carcinoma extract was used as the immunogen for this antibody.

## Storage

Store the CEA antibody at 2-8oC (with azide) or aliquot and store at -20oC or colder (without azide).

## Alternate Names

Carcinoembryonic Antigen-related Cell Adhesion Molecule 5, CEACAM5, CD66, Biliary Glycoprotein (BGP-1), CEA antibody

## References (4)