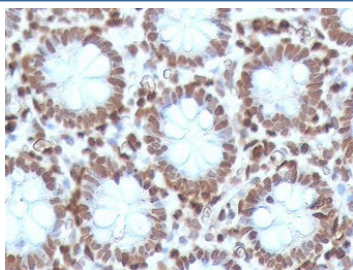


CDX2 Antibody [clone CTHP2-1] (V8310)

Catalog No.	Formulation	Size
V8310-100UG	0.2 mg/ml in 1X PBS with 0.1 mg/ml BSA (US sourced) and 0.05% sodium azide	100 ug
V8310-20UG	0.2 mg/ml in 1X PBS with 0.1 mg/ml BSA (US sourced) and 0.05% sodium azide	20 ug
V8310SAF-100UG	1 mg/ml in 1X PBS; BSA free, sodium azide free	100 ug

[Bulk quote request](#)

Species Reactivity	Human
Format	Purified
Clonality	Monoclonal (mouse origin)
Isotype	Mouse IgG2a, kappa
Clone Name	CTHP2-1
Purity	Protein G affinity chromatography
UniProt	Q99626
Localization	Nuclear
Applications	Immunohistochemistry (FFPE) : 1-2ug/ml for 30 min at RT
Limitations	This CDX2 antibody is available for research use only.



IHC testing of FFPE human colon carcinoma with CDX2 antibody (clone CTHP2-1).
 HIER: boil sections in pH 9 10mM Tris with 1mM EDTA for 10-20 min.

Description

Involved in the transcriptional regulation of multiple genes expressed in the intestinal epithelium. Important in broad range of functions from early differentiation to maintenance of the intestinal epithelial lining of both the small and large intestine. Binds preferentially to methylated DNA. [UniProt]

Application Notes

Optimal dilution of the CDX2 antibody should be determined by the researcher.

Immunogen

Amino acids 150-249 from the human protein were used as the immunogen for this CDX2 antibody.

Storage

Store the CDX2 antibody at 2-8oC (with azide) or aliquot and store at -20oC or colder (without azide).