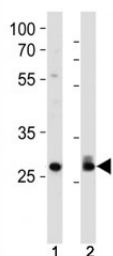


CDK2 Antibody (F50475)

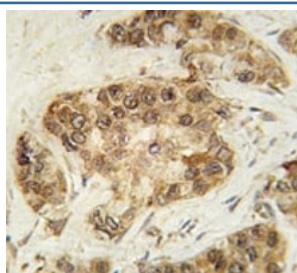
Catalog No.	Formulation	Size
F50475-0.4ML	In 1X PBS, pH 7.4, with 0.09% sodium azide	0.4 ml
F50475-0.08ML	In 1X PBS, pH 7.4, with 0.09% sodium azide	0.08 ml

[Bulk quote request](#)

Availability	1-3 business days
Species Reactivity	Human
Predicted Reactivity	Mouse, Rat, Bovine, Hamster, Xenopus
Format	Antigen affinity purified
Clonality	Polyclonal (rabbit origin)
Isotype	Rabbit Ig
Purity	Antigen affinity
UniProt	P24941
Applications	Western Blot : 1:1000 IHC (Paraffin) : 1:10-1:50
Limitations	This CDK2 antibody is available for research use only.



Cdk2 antibody western blot analysis in 293, HeLa lysate. Predicted molecular weight ~33 kDa.



IHC analysis of FFPE human breast carcinoma tissue stained with CDK2 antibody

Description

CDK2 is a member of the Ser/Thr protein kinase family. This protein kinase is highly similar to the gene products of *S. cerevisiae* cdc28, and *S. pombe* cdc2. It is a catalytic subunit of the cyclin-dependent protein kinase complex, whose activity is restricted to the G1-S phase, and essential for cell cycle G1/S phase transition. This protein associates with and is regulated by the regulatory subunits of the complex including cyclin A or E, CDK inhibitor p21Cip1 (CDKN1A) and p27Kip1 (CDKN1B). Its activity is also regulated by its protein phosphorylation.

Application Notes

Titration of the CDK2 antibody may be required due to differences in protocols and secondary/substrate sensitivity.

Immunogen

A portion of amino acids 1-30 from the human protein was used as the immunogen for this CDK2 antibody.

Storage

Aliquot the CDK2 antibody and store frozen at -20oC or colder. Avoid repeated freeze-thaw cycles.