

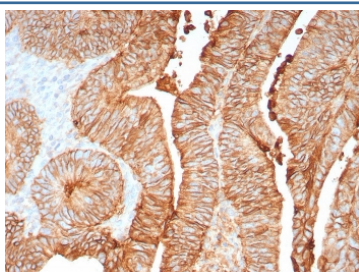
## CDH17 Antibody / Cadherin 17 [clone CDH17/8158R] (V5261)

| Catalog No.    | Formulation   | Size   |
|----------------|---|--------|
| V5261-100UG    | 0.2 mg/ml in 1X PBS with 0.1 mg/ml BSA (US sourced), 0.05% sodium azide | 100 ug |
| V5261-20UG     | 0.2 mg/ml in 1X PBS with 0.1 mg/ml BSA (US sourced), 0.05% sodium azide | 20 ug  |
| V5261SAF-100UG | 1 mg/ml in 1X PBS; BSA free, sodium azide free                          | 100 ug |

Recombinant **RABBIT MONOCLONAL**

[Bulk quote request](#)

|                    |   |
|--------------------|---|
| Availability       | 1-3 business days                                       |
| Species Reactivity | Human   |
| Format             | Purified  |
| Clonality          | Recombinant Rabbit Monoclonal                           |
| Isotype            | Rabbit IgG, kappa                                       |
| Clone Name         | CDH17/8158R   |
| Purity             | Protein A affinity                                      |
| UniProt            | Q12864  |
| Localization       | Cell Surface, Cytoplasm                                 |
| Applications       | Immunohistochemistry (FFPE) : 1-2ug/ml for 30 min at RT |
| Limitations        | This CDH17 antibody is available for research use only. |



IHC staining of FFPE human colon tissue with CDH17 antibody (clone CDH17/8158R). Inset: PBS used in place of primary Ab (secondary Ab negative control). HIER: boil tissue sections in pH 9 10mM Tris with 1mM EDTA for 20 min and allow to cool before testing.

### Description

The cadherins are a family of Calcium-dependent adhesion molecules that function to mediate cell-cell binding critical to the maintenance of tissue structure and morphogenesis.

### Application Notes

Optimal dilution of the CDH17 antibody should be determined by the researcher.

### **Immunogen**

A recombinant partial protein sequence (within amino acids 242-418) from the human protein was used as the immunogen for the CDH17 antibody.

### **Storage**

Aliquot the CDH17 antibody and store frozen at -20oC or colder. Avoid repeated freeze-thaw cycles.