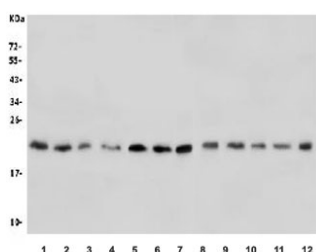


## CDC42 Antibody (RQ5236)

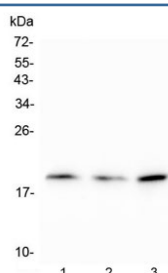
Catalog No.	Formulation	Size
RQ5236	0.5mg/ml if reconstituted with 0.2ml sterile DI water	100 ug

**Bulk quote request**

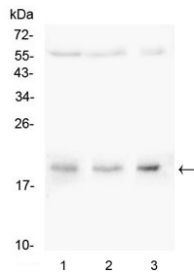
<b>Availability</b>	1-3 business days
<b>Species Reactivity</b>	Human, Mouse, Rat
<b>Format</b>	Antigen affinity purified
<b>Clonality</b>	Polyclonal (rabbit origin)
<b>Isotype</b>	Rabbit IgG
<b>Purity</b>	Affinity purified
<b>Buffer</b>	Lyophilized from 1X PBS with 2% Trehalose and 0.025% sodium azide
<b>UniProt</b>	P60953
<b>Applications</b>	Western Blot : 0.5-1ug/ml Immunohistochemistry (FFPE) : 1-2ug/ml Flow Cytometry : 1-3ug/million cells Direct ELISA : 0.1-0.5ug/ml
<b>Limitations</b>	This CDC42 antibody is available for research use only.



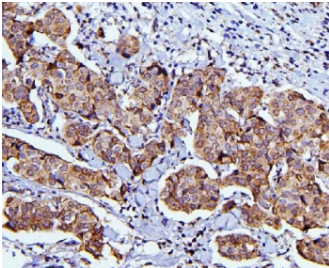
Western blot testing of human 1) placenta, 2) U937, 3) HL60, 4) U-2 OS, 5) U-87 MG, 6) K562, 7) HeLa, 8) rat thymus, 9) rat lung, 10) mouse lung, 11) mouse intestine and 12) mouse SP2/0 lysate with CDC42 antibody. Predicted molecular weight ~21 kDa.



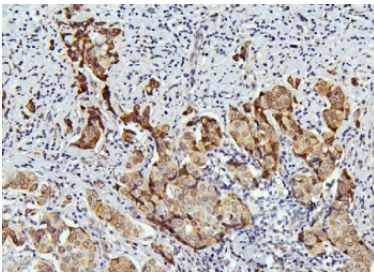
Western blot testing of human 1) U-87 MG, 2) K562 and 3) HeLa cell lysate with CDC42 antibody. Predicted molecular weight ~21 kDa.



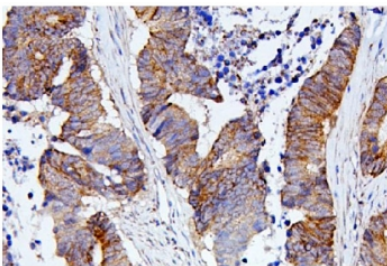
Western blot testing of 1) rat thymus, 2) rat lung and 3) mouse SP20 lysate with CDC42 antibody. Predicted molecular weight ~21 kDa.



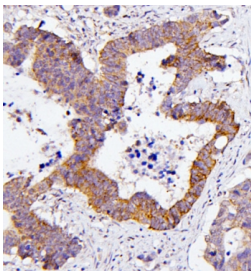
IHC staining of FFPE human breast cancer with CDC42 antibody. HIER: boil tissue sections in pH8 EDTA for 20 min and allow to cool before testing.



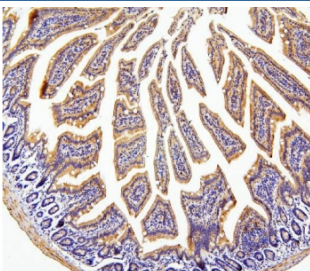
IHC staining of FFPE human breast cancer with CDC42 antibody. HIER: boil tissue sections in pH6, 10mM citrate buffer, for 20 min and allow to cool before testing.



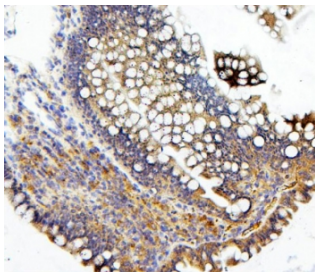
IHC staining of FFPE human colon cancer with CDC42 antibody. HIER: boil tissue sections in pH8 EDTA for 20 min and allow to cool before testing.



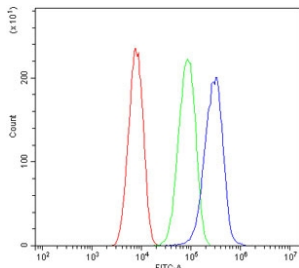
IHC staining of FFPE human colon cancer with CDC42 antibody. HIER: boil tissue sections in pH6, 10mM citrate buffer, for 20 min and allow to cool before testing.



IHC staining of FFPE mouse intestine with CDC42 antibody. HIER: boil tissue sections in pH8 EDTA for 20 min and allow to cool before testing.



IHC staining of FFPE rat intestine with CDC42 antibody. HIER: boil tissue sections in pH8 EDTA for 20 min and allow to cool before testing.



Flow cytometry testing of human SiHa cells with CDC42 antibody at 1ug/million cells (blocked with goat sera); Red=cells alone, Green=isotype control, Blue= CDC42 antibody.

## Description

Cell division control protein 42 homolog also known as CDC42 is a protein involved in regulation of the cell cycle. In humans, CDC42 is encoded by the CDC42 gene. CDC42 is a small GTPase of the Rho-subfamily, which regulates signaling pathways that control diverse cellular functions including cell morphology, migration, endocytosis and cell cycle progression. This protein is highly similar to *Saccharomyces cerevisiae* Cdc 42, and is able to complement the yeast *cdc42-1* mutant. The product of oncogene Dbl was reported to specifically catalyze the dissociation of GDP from this protein. This protein could regulate actin polymerization through its direct binding to Neural Wiskott-Aldrich syndrome protein (N-WASP), which subsequently activates Arp2/3 complex. Alternative splicing of this gene results in multiple transcript variants.

## Application Notes

Optimal dilution of the CDC42 antibody should be determined by the researcher.

## Immunogen

Amino acids K16-C188 from the human protein were used as the immunogen for the CDC42 antibody.

## Storage

Store the CDC42 antibody at -20oC.