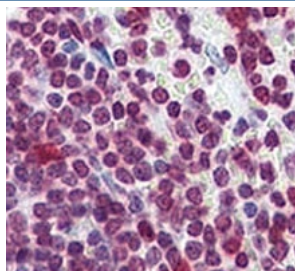


## Cdc25A Antibody (F49546)

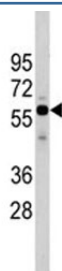
Catalog No.	Formulation	Size
F49546-0.4ML	In 1X PBS, pH 7.4, with 0.09% sodium azide	0.4 ml
F49546-0.08ML	In 1X PBS, pH 7.4, with 0.09% sodium azide	0.08 ml

[Bulk quote request](#)

<b>Availability</b>	1-3 business days
<b>Species Reactivity</b>	Human
<b>Format</b>	Antigen affinity purified
<b>Clonality</b>	Polyclonal (rabbit origin)
<b>Isotype</b>	Rabbit Ig
<b>Purity</b>	Antigen affinity
<b>UniProt</b>	P30304
<b>Applications</b>	Western Blot : 1:1000 IHC (Paraffin) : 1:10-1:50
<b>Limitations</b>	This Cdc25A antibody is available for research use only.



IHC analysis of FFPE human spleen tissue stained with Cdc25A antibody



Western blot analysis of Cdc25A antibody and HeLa lysate. Predicted molecular weight: 59-70 kDa.

## Description

Tyrosine protein phosphatase which functions as a dosage-dependent inducer of mitotic progression. Directly dephosphorylates CDK1 and stimulates its kinase activity. Also dephosphorylates CDK2 in complex with cyclin E, in vitro. [UniProt]

## Application Notes

The stated application concentrations are suggested starting amounts. Titration of the Cdc25A antibody may be required due to differences in protocols and secondary/substrate sensitivity.

## Immunogen

A portion of amino acids 271-300 from the human protein was used as the immunogen for this Cdc25A antibody.

## Storage

Store at 4°C for up to one month. For long term, aliquot the Cdc25A antibody and store frozen at -20°C or colder. Avoid repeated freeze-thaw cycles.