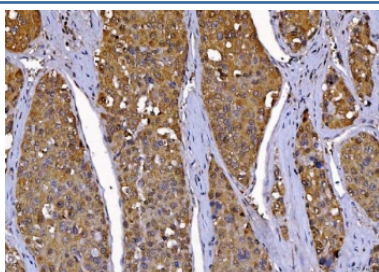


Cdc2 related protein kinase 2 Antibody / CDK2 [clone 6D5B5] (RQ6966)

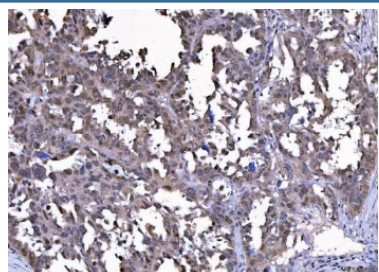
Catalog No.	Formulation	Size
RQ6966	0.5mg/ml if reconstituted with 0.2ml sterile DI water	100 ug

Bulk quote request

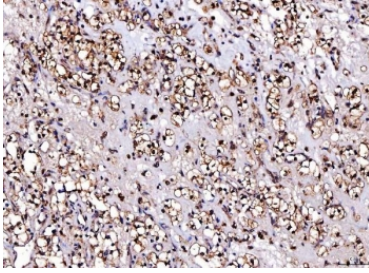
Availability	1-3 business days
Species Reactivity	Human, Mouse, Rat
Format	Antigen affinity purified
Clonality	Monoclonal (mouse origin)
Isotype	Mouse IgG2b
Clone Name	6D5B5
Purity	Antigen affinity purified
Buffer	Lyophilized from 1X PBS with 2% Trehalose
UniProt	P24941
Localization	Cytoplasmic, nuclear
Applications	Western Blot : 0.5-1 ug/ml Immunohistochemistry (FFPE) : 2-5ug/ml
Limitations	This Cdc2 related protein kinase 2 antibody is available for research use only.



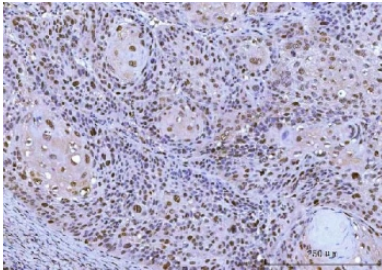
IHC staining of FFPE human liver cancer tissue with Cdc2 related protein kinase 2 antibody. HIER: boil tissue sections in pH8 EDTA for 20 min and allow to cool before testing.



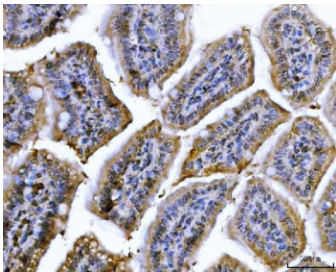
IHC staining of FFPE human serous adenocarcinoma of ovary tissue with Cdc2 related protein kinase 2 antibody. HIER: boil tissue sections in pH8 EDTA for 20 min and allow to cool before testing.



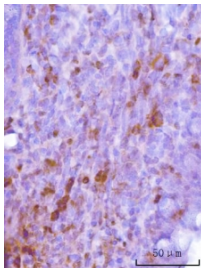
IHC staining of FFPE human renal clear cell carcinoma tissue with Cdc2 related protein kinase 2 antibody. HIER: boil tissue sections in pH8 EDTA for 20 min and allow to cool before testing.



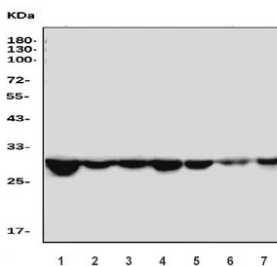
IHC staining of FFPE human laryngeal squamous cell carcinoma tissue with Cdc2 related protein kinase 2 antibody. HIER: boil tissue sections in pH8 EDTA for 20 min and allow to cool before testing.



IHC staining of FFPE mouse colon tissue with Cdc2 related protein kinase 2 antibody. HIER: boil tissue sections in pH8 EDTA for 20 min and allow to cool before testing.



IHC staining of FFPE rat colon tissue with Cdc2 related protein kinase 2 antibody. HIER: boil tissue sections in pH8 EDTA for 20 min and allow to cool before testing.



Western blot testing of 1) human Jurkat, 2) human HepG2, 3) human U-2 OS, 4) rat heart, 5) rat L6, 6) mouse heart and 7) mouse C2C12 cell lysate with Cdc2 related protein kinase 2 antibody. Predicted molecular weight: 30-33 kDa.

Description

CDK2, Cyclin-Dependent Kinase 2, is also known as P33. The CDK2 protein was highly homologous to p34 (CDC2) kinase and more significantly homologous to *Xenopus* Eg1 kinase, suggesting that CDK2 is the human homolog of Eg1. The CDK2 gene is mapped to 12q13, the same region to which the CDK4 gene maps. Human cyclin A binds independently to 2 kinases, p34 (cdc2) or p33. In adenovirus-transformed cells, the viral E1A oncoprotein seems to associate with p33/cyclin A but not with p34 (cdc2)/cyclin A. The gene for p33 shares 65% sequence identity with p34 (cdc2). P33 (cdk2) plays a unique role in cell cycle regulation of vertebrate cells.

Application Notes

Optimal dilution of the Cdc2 related protein kinase 2 antibody should be determined by the researcher.

Immunogen

Recombinant human protein (amino acids E81-L298) was used as the immunogen for the Cdc2 related protein kinase 2 antibody.

Storage

After reconstitution, the Cdc2 related protein kinase 2 antibody can be stored for up to one month at 4oC. For long-term, aliquot and store at -20oC. Avoid repeated freezing and thawing.