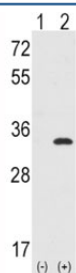


CDC2 Antibody / CDK1 (F44349)

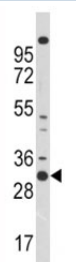
Catalog No.	Formulation	Size
F44349-0.4ML	In 1X PBS, pH 7.4, with 0.09% sodium azide	0.4 ml
F44349-0.08ML	In 1X PBS, pH 7.4, with 0.09% sodium azide	0.08 ml

Bulk quote request

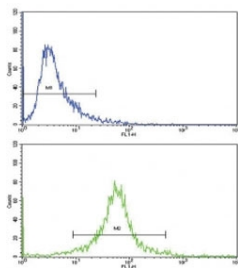
Availability	1-3 business days
Species Reactivity	Human
Predicted Reactivity	Bovine, Chicken
Format	Antigen affinity purified
Clonality	Polyclonal (rabbit origin)
Isotype	Rabbit Ig
Purity	Antigen affinity
UniProt	P06493
Applications	Western Blot : 1:1000 Flow Cytometry : 1:10-1:50
Limitations	This CDC2 antibody is available for research use only.



Western blot analysis of CDC2 antibody and 293 cell lysate either nontransfected (Lane 1) or transiently transfected with the CDC2 gene (2).



Western blot analysis of CDC2 antibody and 293 lysate



Flow cytometric analysis of 293 cells using CDC2 antibody (green) compared to a [negative control](http://www.ncbi.nlm.nih.gov/search_result.php?search_txt=n1001) (blue). FITC-conjugated goat-anti-rabbit secondary Ab was used for the analysis.

Description

CDC2 plays a key role in the control of the eukaryotic cell cycle by modulating the centrosome cycle as well as mitotic onset; promotes G2-M transition, and regulates G1 progress and G1-S transition via association with multiple interphase cyclins. [UniProt]

Application Notes

Titration of the CDC2 antibody may be required due to differences in protocols and secondary/substrate sensitivity.

Immunogen

A portion of amino acids 1-29 from the human protein was used as the immunogen for this CDC2 antibody.

Storage

Aliquot the CDC2 antibody and store frozen at -20oC or colder. Avoid repeated freeze-thaw cycles.