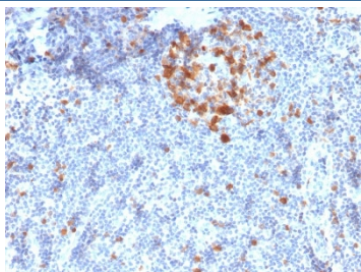


CDC2 Antibody / CDK1 [clone A17.1.1] (V3748)

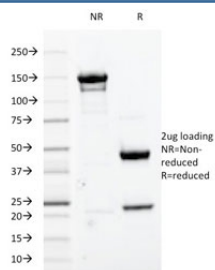
Catalog No.	Formulation	Size
V3748-100UG	0.2 mg/ml in 1X PBS with 0.1 mg/ml BSA (US sourced) and 0.05% sodium azide	100 ug
V3748-20UG	0.2 mg/ml in 1X PBS with 0.1 mg/ml BSA (US sourced) and 0.05% sodium azide	20 ug
V3748SAF-100UG	1 mg/ml in 1X PBS; BSA free, sodium azide free	100 ug
V3748IHC-7ML	Prediluted in 1X PBS with 0.1 mg/ml BSA (US sourced) and 0.05% sodium azide; *For IHC use only*	7 ml

[Bulk quote request](#)

Species Reactivity	Human, Mouse, Rat
Format	Purified
Clonality	Monoclonal (mouse origin)
Isotype	Mouse IgG2a, kappa
Clone Name	A17.1.1
Purity	Protein G purified antibody
UniProt	P06493
Gene ID	983
Localization	Nuclear and Cytoplasmic
Applications	<p>Inhibits Activation Of P34cdc2 Kinase By Cyclins :</p> <p>Immunofluorescence : 1-2ug/ml</p> <p>Immunoprecipitation :</p> <p>Kinase Assay :</p> <p>Western Blot :</p> <p>Immunohistochemistry (FFPE) : 2-4ug/ml for 30 min at RT</p>
Limitations	This CDC2 antibody is available for research use only.



IHC staining of FFPE human tonsil with CDC2 antibody (clone A17.1.1). HIER: boil tissue sections in pH6, 10mM citrate buffer, for 10-20 min followed by cooling at RT for 20 min.



SDS-PAGE analysis of purified, BSA-free CDC2 antibody (clone A17.1.1) as confirmation of integrity and purity.

Description

Recognizes a 34kDa protein (cdk1), identified as Cdk1/Cdc2/p34cdc2 (a catalytic subunit of Maturation Promoting Factor). Its epitope maps near the C-terminus of the protein and its core is thought to be LGTPNNEV (aa220-227 in murine cdc2). It shows no cross reaction with cdk2 p32. It supports the kinase activity. p34cdc2 plays a crucial role during cell division and is most active during mitosis. It is a serine/threonine kinase, which is activated by cyclin, by dephosphorylation of tyrosine residues. p34cdc2 is inactivated by a tyrosine kinase. This mAb reportedly inhibits the activation of p34cdc2 kinase by cyclins.

Application Notes

Optimal dilution of the CDC2 antibody should be determined by the researcher.

1. The prediluted format is supplied in a dropper bottle and is optimized for use in IHC. After epitope retrieval step (if required), drip mAb solution onto the tissue section and incubate at RT for 30 min.

Immunogen

A partial protein (the C-terminal two-thirds of Xenopus CDC2) was used as the immunogen for this CDC2 antibody.

Storage

Store the CDC2 antibody at 2-8°C (with azide) or aliquot and store at -20°C or colder (without azide).