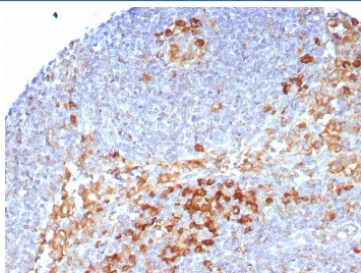


CD9 Antibody [clone CD9/7416] (V4260)

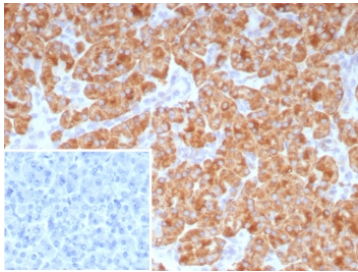
Catalog No.	Formulation	Size
V4260-100UG	0.2 mg/ml in 1X PBS with 0.1 mg/ml BSA (US sourced), 0.05% sodium azide	100 ug
V4260-20UG	0.2 mg/ml in 1X PBS with 0.1 mg/ml BSA (US sourced), 0.05% sodium azide	20 ug
V4260SAF-100UG	1 mg/ml in 1X PBS; BSA free, sodium azide free	100 ug

[Bulk quote request](#)

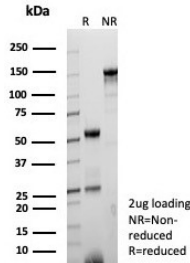
Availability	1-3 business days
Species Reactivity	Human
Format	Purified
Clonality	Monoclonal (mouse origin)
Isotype	Mouse IgG1, kappa
Clone Name	CD9/7416
Purity	Protein A/G affinity
UniProt	P21926
Localization	Cell surface, Cytoplasm
Applications	Immunohistochemistry (FFPE) : 1-2ug/ml for 30 min at RT Western Blot : 2-4ug/ml
Limitations	This CD9 antibody is available for research use only.



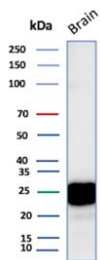
IHC staining of FFPE human lymph node tissue with CD9 antibody (clone CD9/7416).
HIER: boil tissue sections in pH 9 10mM Tris with 1mM EDTA for 20 min and allow to cool before testing.



IHC staining of FFPE human pancreas tissue with CD9 antibody (clone CD9/7416). Inset: PBS used in place of primary Ab (secondary Ab negative control). HIER: boil tissue sections in pH 9 10mM Tris with 1mM EDTA for 20 min and allow to cool before testing.



SDS-PAGE analysis of purified, BSA-free CD9 antibody (clone CD9/7416) as confirmation of integrity and purity.



Western blot testing of human brain tissue lysate with CD9 antibody. Predicted molecular weight: 23-27 kDa.

Description

CD9 is a type IV transmembrane glycoprotein with four transmembrane domains. CD9 on pre-B cells may play a role in cell-cell adhesion. In addition, CD9 may play a role in signal transduction mediated by interaction with low molecular weight GTP binding proteins. CD9 is expressed on early B cells, eosinophils, basophils and activated T cells and is a major component of the platelet cell surface. It is also expressed on most non-T acute lymphoblastic leukemia cells and on some acute myeloid and chronic lymphoid leukemia.

Application Notes

Optimal dilution of the CD9 antibody should be determined by the researcher.

Immunogen

Recombinant full-length human CD9 protein was used as the immunogen for the CD9 antibody.

Storage

Aliquot the CD9 antibody and store frozen at -20°C or colder. Avoid repeated freeze-thaw cycles.

