

CD8a Antibody [clone RIV11] (V2385)

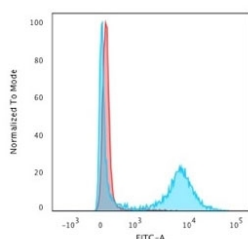
Catalog No.	Formulation	Size
V2385-100UG	0.2 mg/ml in 1X PBS with 0.1 mg/ml BSA (US sourced) and 0.05% sodium azide	100 ug
V2385-20UG	0.2 mg/ml in 1X PBS with 0.1 mg/ml BSA (US sourced) and 0.05% sodium azide	20 ug
V2385SAF-100UG	1 mg/ml in 1X PBS; BSA free, sodium azide free	100 ug



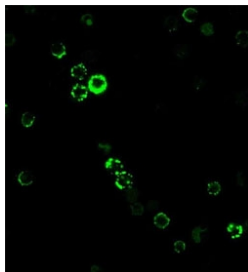
Citations (4)

[Bulk quote request](#)

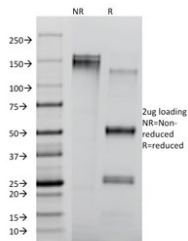
Availability	1-3 business days
Species Reactivity	Human
Format	Purified
Clonality	Monoclonal (mouse origin)
Isotype	Mouse IgG1, kappa
Clone Name	RIV11
Purity	Protein G affinity chromatography
Buffer	1X PBS, pH 7.4
UniProt	P01732
Localization	Cell surface
Applications	Flow Cytometry : 0.5-1ug/10 ⁶ cells Immunofluorescence : 0.5-1ug/ml
Limitations	This CD8a antibody is available for research use only.



Flow cytometry staining of human PBM cells with CD8a antibody (clone RIV11); Red=isotype control, Blue= SLC16A11 antibody.



Immunofluorescent staining of human PBM cells with CD8a antibody (clone RIV11).



SDS-PAGE analysis of purified, BSA-free CD8 antibody (clone RIV11) as confirmation of integrity and purity.

Description

CD8 molecule consists of two chains, termed alpha and beta chain, which are expressed as a disulphide-linked heterodimer or homodimer. CD8 is expressed on T cell subset (cytotoxic/suppressor T cells), thymocytes and NK cells.

Application Notes

The stated application concentrations are suggested starting amounts. Variations in protocols, secondaries and substrates may require the CD8a antibody to be titrated up or down for optimal performance.

Immunogen

Recombinant human protein was used as immunogen for this CD8a antibody.

Storage

CD8a antibody with azide can be stored at 2-8°C. The azide-free format should be aliquoted and stored at -20°C or colder.

References (1)