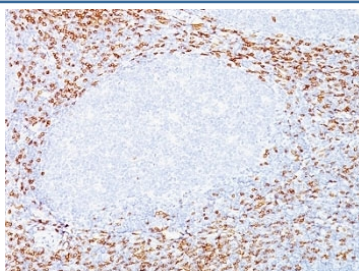


## CD8a Antibody Cocktail [clone C8/468 + C8/144B] (V3134)

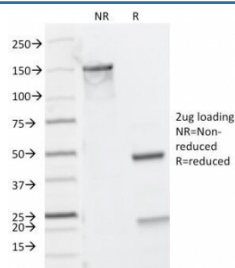
Catalog No.	Formulation	Size
V3134-100UG	0.2 mg/ml in 1X PBS with 0.1 mg/ml BSA (US sourced) and 0.05% sodium azide	100 ug
V3134-20UG	0.2 mg/ml in 1X PBS with 0.1 mg/ml BSA (US sourced) and 0.05% sodium azide	20 ug
V3134SAF-100UG	1 mg/ml in 1X PBS; BSA free, sodium azide free	100 ug
V3134IHC-7ML	Prediluted in 1X PBS with 0.1 mg/ml BSA (US sourced) and 0.05% sodium azide; *For IHC use only*	7 ml

**Bulk quote request**

<b>Availability</b>	1-3 business days
<b>Species Reactivity</b>	Human
<b>Format</b>	Purified
<b>Clonality</b>	Monoclonal (mouse origin)
<b>Isotype</b>	Mouse IgG1, kappa
<b>Clone Name</b>	C8/468 + C8/144B
<b>Purity</b>	Protein G affinity chromatography
<b>UniProt</b>	P01732
<b>Localization</b>	Cell surface
<b>Applications</b>	Immunohistochemistry (FFPE) : 1-2ug/ml for 30 min at RT
<b>Limitations</b>	This CD8a antibody cocktail is available for research use only.



IHC: Formalin-fixed, paraffin-embedded human tonsil stained with CD8a antibody (C8/468 + C8/144B).



SDS-PAGE Analysis of Purified, BSA-Free CD8a Antibody Cocktail (clones C8/468 + C8/144B). Confirmation of Integrity and Purity of the Antibody.

## Description

CD8 is a cell surface receptor expressed either as a heterodimer with the CD8 beta chain (CD8a/b) or as a homodimer (CD8a/a). A majority of thymocytes and a subpopulation of mature T cells and NK cells express CD8a. CD8 binds to MHC class 1 and through its association with protein tyrosine kinase p56lck plays a role in T cell development and activation of mature T cells. For mature T-cells, CD4 and CD8 are mutually exclusive, so anti-CD8, generally used in conjunction with anti-CD4. It is a useful marker for distinguishing helper/inducer T-lymphocytes, and most peripheral T-cell lymphomas are CD4+/CD8-. Anaplastic large cell lymphoma is usually CD4+ and CD8-, and in T-lymphoblastic lymphoma/leukemia, CD4 and CD8 are often co-expressed. CD8 is also found in littoral cell angioma of the spleen.

## Application Notes

The optimal dilution of the CD8a antibody for each application should be determined by the researcher.

1. Staining of formalin-fixed tissues requires boiling tissue sections in 10mM citrate buffer, pH 6.0, for 10-20 min followed by cooling at RT for 20 minutes.
2. The prediluted format is supplied in a dropper bottle and is optimized for use in IHC. After epitope retrieval step (if required), drip mAb solution onto the tissue section and incubate at RT for 30 min.

## Immunogen

Human recombinant protein (C8/468) and 13 amino acid peptide from the C-terminal cytoplasmic domain of the alpha chain of human CD8 (C8/144B) were used as the immunogens for this CD8a antibody cocktail.

## Storage

Store the CD8a antibody cocktail at 2-8oC (with azide) or aliquot and store at -20oC or colder (without azide).