

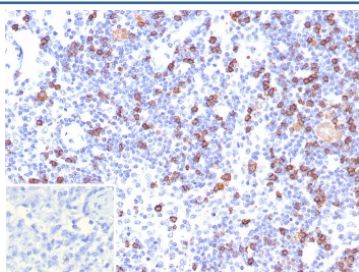
CD8A Antibody [clone CD8/7793R] (V4877)

| Catalog No. | Formulation | Size |
|----------------|---|--------|
| V4877-100UG | 0.2 mg/ml in 1X PBS with 0.1 mg/ml BSA (US sourced), 0.05% sodium azide | 100 ug |
| V4877-20UG | 0.2 mg/ml in 1X PBS with 0.1 mg/ml BSA (US sourced), 0.05% sodium azide | 20 ug |
| V4877SAF-100UG | 1 mg/ml in 1X PBS; BSA free, sodium azide free | 100 ug |

Recombinant **RABBIT MONOCLONAL**

[Bulk quote request](#)

| | |
|--------------------|---|
| Availability | 1-3 business days |
| Species Reactivity | Human |
| Format | Purified |
| Clonality | Recombinant Rabbit Monoclonal |
| Isotype | Rabbit IgG, kappa |
| Clone Name | CD8/7793R |
| Purity | Protein A/G affinity |
| UniProt | P01732 |
| Localization | Cell surface |
| Applications | Immunohistochemistry (FFPE) : 1-2ug/ml for 30 min at RT |
| Limitations | This CD8A antibody is available for research use only. |



IHC staining of FFPE human lymph node tissue with CD8a antibody (clone CD8/7793R). Inset: PBS used in place of primary Ab (secondary Ab negative control). HIER: boil tissue sections in pH 9 10mM Tris with 1mM EDTA for 20 min and allow to cool before testing.

Description

This mAb is specific for the 32kDa alpha chain of human CD8, known as CD8a or CD8 alpha. CD8 is a cell surface receptor expressed either as a heterodimer with the CD8 beta chain (CD8 alpha/beta) or as a homodimer (CD8 alpha/alpha). A majority of thymocytes and a subpopulation of mature T cells and NK cells express CD8a. CD8 binds to MHC class 1 and through its association with protein tyrosine kinase p56lck plays a role in T cell development and

activation of mature T cells. For mature T-cells, CD4 and CD8 are mutually exclusive, so anti-CD8, generally used in conjunction with anti-CD4. It is a useful marker for distinguishing helper/inducer T-lymphocytes, and most peripheral T-cell lymphomas are CD4+/CD8-. Anaplastic large cell lymphoma is usually CD4+ and CD8-, and in T-lymphoblastic lymphoma/leukemia, CD4 and CD8 are often co-expressed. CD8 is also found in littoral cell angiosarcoma of the spleen.

Application Notes

Optimal dilution of the CD8A antibody should be determined by the researcher.

Immunogen

Recombinant human full-length CD8a protein was used as the immunogen for the CD8A antibody.

Storage

Aliquot the CD8A antibody and store frozen at -20oC or colder. Avoid repeated freeze-thaw cycles.