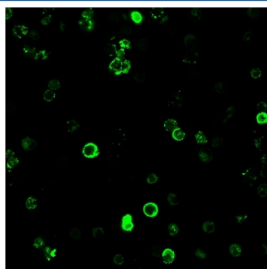


## CD8a Antibody [clone C8/468] (V2043CF488)

Catalog No.	Formulation	Size
V2043CF488-100T	500 ul at 0.1 mg/ml with 0.1 mg/ml BSA (US sourced), 0.05% sodium azide	100 Tests

[Bulk quote request](#)

Availability	1-3 business days
Species Reactivity	Human
Format	CF488 Conjugate
Clonality	Monoclonal (mouse origin)
Isotype	Mouse IgG1, kappa
Clone Name	C8/468
Purity	Protein G affinity chromatography
UniProt	P01732
Localization	Cell surface
Applications	Flow Cytometry : 1-2ug/million cells Immunofluorescence : 1-3ug/ml
Limitations	This CD8a antibody is available for research use only.



Immunofluorescent staining of human PBMC with CD8a antibody + CF488-conjugated secondary (clone C8/468).

## Description

CD8 is a cell surface receptor expressed either as a heterodimer with the CD8 beta chain (CD8 alpha/beta) or as a homodimer (CD8 alpha/alpha). A majority of thymocytes and a subpopulation of mature T cells and NK cells express CD8a. CD8 binds to MHC class 1 and through its association with protein tyrosine kinase p56lck plays a role in T cell development and activation of mature T cells. For mature T-cells, CD4 and CD8 are mutually exclusive, so anti-CD8, generally used in conjunction with anti-CD4. It is a useful marker for distinguishing helper/inducer T-lymphocytes, and most peripheral T-cell lymphomas are CD4+/CD8-. Anaplastic large cell lymphoma is usually CD4+ and CD8-, and in T-

lymphoblastic lymphoma/leukemia, CD4 and CD8 are often co-expressed. CD8 is also found in littoral cell angioma of the spleen.

## **Application Notes**

Optimal dilution of the CD8a antibody should be determined by the researcher.

## **Immunogen**

Human recombinant protein was used as the immunogen for this CD8a antibody.

## **Storage**

Store the CD8a antibody at 2-8oC, protected from light.