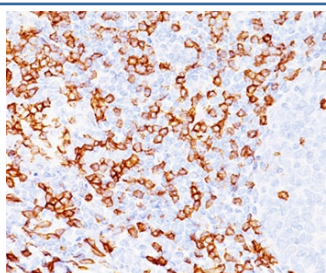


CD8a Antibody [clone C8/468] (V2043)

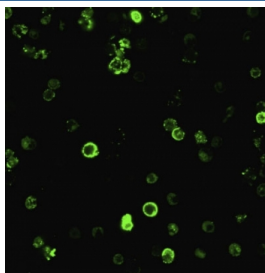
Catalog No.	Formulation	Size
V2043-100UG	0.2 mg/ml in 1X PBS with 0.1 mg/ml BSA (US sourced) and 0.05% sodium azide	100 ug
V2043-20UG	0.2 mg/ml in 1X PBS with 0.1 mg/ml BSA (US sourced) and 0.05% sodium azide	20 ug
V2043SAF-100UG	1 mg/ml in 1X PBS; BSA free, sodium azide free	100 ug
V2043IHC-7ML	Prediluted in 1X PBS with 0.1 mg/ml BSA (US sourced) and 0.05% sodium azide; *For IHC use only*	7 ml

[Bulk quote request](#)

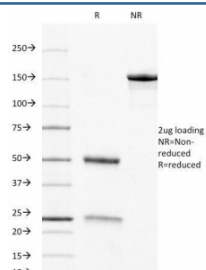
Species Reactivity	Human
Format	Purified
Clonality	Monoclonal (mouse origin)
Isotype	Mouse IgG1, kappa
Clone Name	C8/468
Purity	Protein G affinity chromatography
Buffer	1X PBS, pH 7.4
UniProt	P01732
Gene ID	925
Localization	Cell surface
Applications	Immunohistochemistry (FFPE) : 1-2ug/ml for 30 min at RT Immunofluorescence : 1-2ug/ml
Limitations	This CD8a antibody is available for research use only.



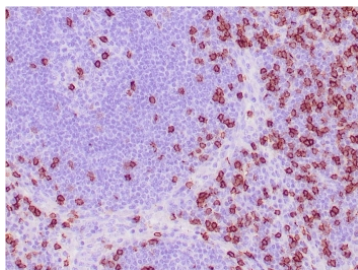
IHC testing of FFPE human tonsil (20X) stained with CD8a antibody (C8/468). Note cell surface staining.



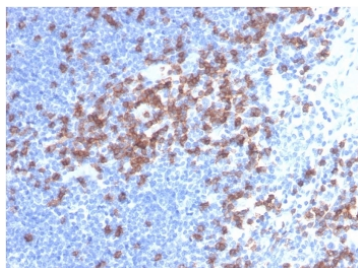
Immunofluorescent staining of human PBMC with CD8a antibody (clone C8/468).



SDS-PAGE analysis of purified, BSA-free CD8a antibody (clone C8/468) as confirmation of integrity and purity.



IHC staining of FFPE human tonsil tissue with CD8a antibody (clone C8/468). HIER: boil tissue sections in pH 9 10mM Tris with 1mM EDTA for 20 min and allow to cool before testing.



IHC staining of FFPE human lymph node tissue with CD8a antibody (clone C8/468). HIER: boil tissue sections in pH 9 10mM Tris with 1mM EDTA for 20 min and allow to cool before testing.

Description

CD8 is a cell surface receptor expressed either as a heterodimer with the beta chain or as a homodimer. A majority of thymocytes and a subpopulation of mature Tcells and NK cells express CD8a. It binds to MHC class 1 and through its association with protein tyrosine kinase p56lck plays a role in Tcell development and activation of mature Tcells. For mature Tcells, CD8 and 4 are mutually exclusive, so antibody to CD8 is generally used in conjunction with antibody to CD4. CD8a antibody is a useful marker for distinguishing helper/inducer T-lymphocytes, and most peripheral Tcell lymphomas are CD4+/CD8-. Anaplastic large cell lymphoma is usually CD4+/CD8-, and in T-lymphoblastic lymphoma/leukemia, they are often co-expressed. It is also found in littoral cell angioma of the spleen.

Application Notes

The concentration stated for each application is a general starting point. Variations in protocols, secondaries and substrates may require the CD8a antibody to be titrated up or down for optimal performance.

- >1. Staining of formalin-fixed tissues requires boiling tissue sections in pH 9 10mM Tris with 1mM EDTA for 10-20 min followed by cooling at RT for 20 minutes.
2. The prediluted format is supplied in a dropper bottle and is optimized for use in IHC. After epitope retrieval step (if

required), drip mAb solution onto the tissue section and incubate at RT for 30 min.

Immunogen

Human recombinant protein was used as the immunogen for this CD8a antibody.

Storage

Store the CD8a antibody at 2-8oC (with azide) or aliquot and store at -20oC or colder (without azide).

Alternate Names

Alpha polypeptide (p32), T8/Leu-2 T-lymphocyte differentiation antigen, Ly3, LYT3, CD8a

References (1)