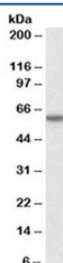


## CD80 Antibody (R34234)

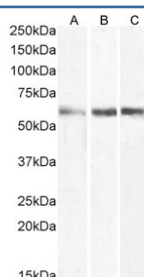
Catalog No.	Formulation	Size
R34234-100UG	0.5 mg/ml in 1X TBS, pH7.3, with 0.5% BSA (US sourced) and 0.02% sodium azide	100 ug

[Bulk quote request](#)

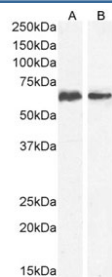
Availability	1-3 business days
Species Reactivity	Human
Format	Antigen affinity purified
Clonality	Polyclonal (goat origin)
Isotype	Goat Ig
Purity	Antigen affinity
Gene ID	941
Localization	Cytoplasmic, membranous
Applications	Western Blot : 1-3ug/ml Immunohistochemistry (FFPE) : 5-7ug/ml ELISA (peptide) LOD : 1:4000
Limitations	This CD80 antibody is available for research use only.



Western blot testing of human lymph node lysate with CD80 antibody at 1ug/ml. Expected molecular weight: 34-75 kDa depending on the level of glycosylation.



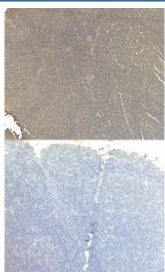
Western blot testing of human A) lymph node, B) bone marrow and C) spleen tissue lysate with CD80 antibody. Expected molecular weight: 34-75 kDa depending on the level of glycosylation.



Western blot testing of human A) K562 and B) U937 cell lysate with CD80 antibody.  
Expected molecular weight: 34-75 kDa depending on the level of glycosylation.



IHC staining of FFPE human spleen tissue with CD80 antibody at 6ug/ml (top) and without primary antibody (bottom). Required HIER: steamed antigen retrieval with pH6 citrate buffer; HRP-staining.



IHC staining of FFPE human tonsil tissue with CD80 antibody at 5ug/ml (top) and without primary antibody (bottom). Required HIER: steamed antigen retrieval with pH6 citrate buffer; HRP-staining.

## Description

Additional name(s) for this target protein: B-lymphocyte activation antigen B7, B7-1, LAB7

## Application Notes

Optimal dilution of the CD80 antibody should be determined by the researcher.

## Immunogen

Amino acids HLRVNQTFNWNTTK were used as the immunogen for this CD80 antibody.

## Storage

Aliquot and store the CD80 antibody at -20oC.