

CD74 Antibody [clone LN-2] (V2077)

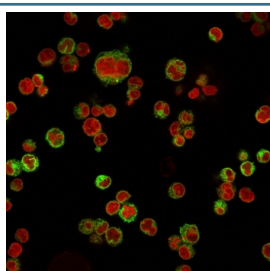
Catalog No.	Formulation	Size
V2077-100UG	0.2 mg/ml in 1X PBS with 0.1 mg/ml BSA (US sourced) and 0.05% sodium azide	100 ug
V2077-20UG	0.2 mg/ml in 1X PBS with 0.1 mg/ml BSA (US sourced) and 0.05% sodium azide	20 ug
V2077SAF-100UG	1 mg/ml in 1X PBS; BSA free, sodium azide free	100 ug
V2077IHC-7ML	Prediluted in 1X PBS with 0.1 mg/ml BSA (US sourced) and 0.05% sodium azide; *For IHC use only*	7 ml



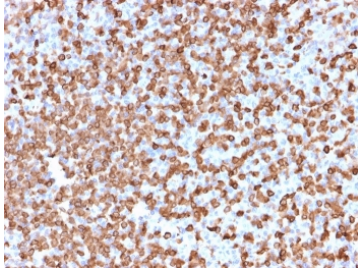
Citations (6)

[Bulk quote request](#)

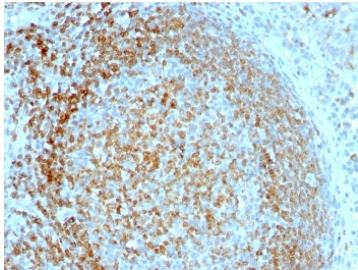
Species Reactivity	Human, Mouse
Format	Purified
Clonality	Monoclonal (mouse origin)
Isotype	Mouse IgG1, kappa
Clone Name	LN-2
Purity	Protein G affinity chromatography
Buffer	1X PBS, pH 7.4
Gene ID	972
Localization	Cell surface and paranuclear globular
Applications	Flow Cytometry : 1-2ug/10 ⁶ cells Immunofluorescence (methanol Fixed) : 1-4ug/ml Immunohistochemistry (FFPE) : 1-2ug/ml for 30 min at RT Western Blot : 2-4ug/ml
Limitations	This CD74 antibody is available for research use only.



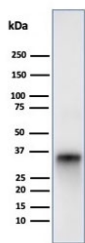
Immunofluorescent staining of human Raji cells with CD74 antibody (clone LN-2, green) and Reddot nuclear stain (red).



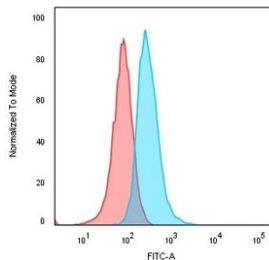
IHC staining of FFPE human spleen tissue with CD74 antibody (clone LN-2). HIER: boil tissue sections in pH 9 10mM Tris with 1mM EDTA for 20 min and allow to cool before testing.



IHC staining of FFPE human tonsil tissue with CD74 antibody (clone LN-2). HIER: boil tissue sections in pH 9 10mM Tris with 1mM EDTA for 20 min and allow to cool before testing.



Western blot testing of human Raji cell lysate with CD74 antibody (clone LN-2). Expected molecular weight: 33-43 kDa.



Flow cytometry testing of human Raji cells with CD74 antibody (clone LN-2); Red=isotype control, Blue= CD74 antibody.

Description

CD74 is a type II transmembrane protein which binds to the peptide binding groove of newly synthesized MHC class II alpha/beta heterodimers and prevents their premature association with endogenous polypeptides. CD74 is expressed primarily by antigen presenting cells, such as B-lymphocytes (from before the pre-B cell stage to before the plasma cell stage), macrophages, and monocytes, and many epithelial cells. CD74 antibody stains predominantly germinal center lymphocytes and B-cell lymphomas, but rarely T-cell lymphomas. antibody to CD74 has been shown to be useful in differentiating atypical fibroxanthoma (-) from malignant fibrous histiocytoma (+).

Application Notes

The concentration stated for each application is a general starting point. Variations in protocols, secondaries and substrates may require the antibody to be titrated up or down for optimal performance.

1. Staining of formalin-fixed tissues requires boiling tissue sections in 10mM citrate buffer, pH 6.0, for 10-20 min followed by cooling at RT for 20 minutes.
2. The prediluted format is supplied in a dropper bottle and is optimized for use in IHC. After epitope retrieval step (if required), drip mAb solution onto the tissue section and incubate at RT for 30 min.

Immunogen

SU-DHL-4 lymphoma cells were used as the immunogen for this CD74 antibody.

Storage

Store the CD74 antibody at 2-8oC (with azide) or aliquot and store at -20oC or colder (without azide).

Alternate Names

CLIP, DHLAG, Gamma chain of class II antigens, HLA class II histocompatibility antigen gamma chain, HLA-DR antigens-associated invariant chain, HLADR-gamma (HLADG), Ia antigen-associated invariant chain, Ia-gamma, Major histocompatibility complex class II invariant chain, MHC HLA-DR gamma chain, CD74 antibody

References (2)