

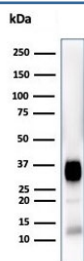
CD7 Antibody [clone CD7/3868R] (V4564)

Catalog No.	Formulation	Size
V4564-100UG	0.2 mg/ml in 1X PBS with 0.1 mg/ml BSA (US sourced), 0.05% sodium azide	100 ug
V4564-20UG	0.2 mg/ml in 1X PBS with 0.1 mg/ml BSA (US sourced), 0.05% sodium azide	20 ug
V4564SAF-100UG	1 mg/ml in 1X PBS; BSA free, sodium azide free	100 ug

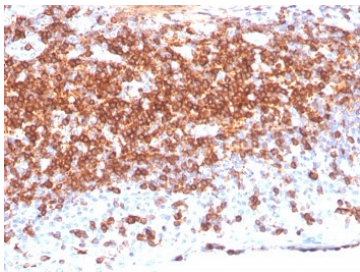
Recombinant **RABBIT MONOCLONAL**

[Bulk quote request](#)

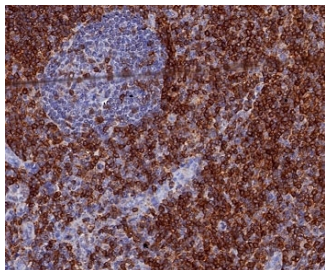
Availability	1-3 business days
Species Reactivity	Human
Format	Purified
Clonality	Recombinant Rabbit Monoclonal
Isotype	Rabbit IgG, kappa
Clone Name	CD7/3868R
Purity	Protein A/G affinity
UniProt	P09564
Localization	Cell Surface
Applications	Western Blot : 1-2ug/ml Immunohistochemistry (FFPE) : 1-2ug/ml for 30 min at RT
Limitations	This CD7 antibody is available for research use only.



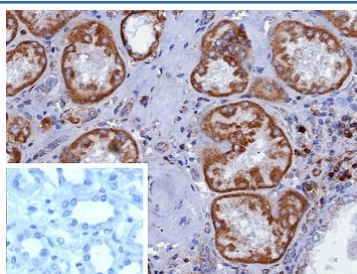
Western blot testing of human Jurkat cell lysate with CD7 antibody (clone CD7/3868R).
Expected molecular weight: 25-40 kDa depending on glycosylation level.



IHC staining of FFPE human lymph node tissue with CD7 antibody (clone CD7/3868R). HIER: boil tissue sections in pH 9 10mM Tris with 1mM EDTA for 20 min and allow to cool before testing.



IHC staining of FFPE human tonsil tissue with CD7 antibody (clone CD7/3868R). HIER: boil tissue sections in pH 9 10mM Tris with 1mM EDTA for 20 min and allow to cool before testing.



IHC staining of FFPE human kidney tissue with CD7 antibody (clone CD7/3868R). Inset: PBS used in place of primary Ab (secondary Ab negative control). HIER: boil tissue sections in pH 9 10mM Tris with 1mM EDTA for 20 min and allow to cool before testing.

Description

CD7 is a member of the immunoglobulin gene superfamily. It is expressed on the majority of immature and mature T-lymphocytes, and T cell leukemia, natural killer cells, a small subpopulation of normal B cells and on malignant B cells.

Application Notes

Optimal dilution of the CD7 antibody should be determined by the researcher.

Immunogen

Recombinant full-length human CD7 protein was used as the immunogen for the CD7 antibody.

Storage

Aliquot the CD7 antibody and store frozen at -20°C or colder. Avoid repeated freeze-thaw cycles.