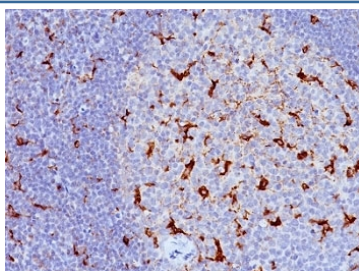


## CD68 Antibody [clone LAMP4/824] (V3031)

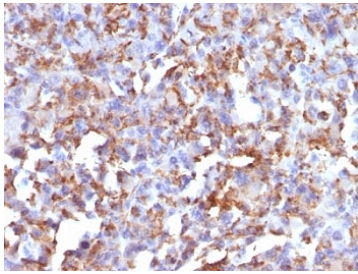
Catalog No.	Formulation	Size
V3031-100UG	0.2 mg/ml in 1X PBS with 0.1 mg/ml BSA (US sourced) and 0.05% sodium azide	100 ug
V3031-20UG	0.2 mg/ml in 1X PBS with 0.1 mg/ml BSA (US sourced) and 0.05% sodium azide	20 ug
V3031SAF-100UG	1 mg/ml in 1X PBS; BSA free, sodium azide free	100 ug
V3031IHC-7ML	Prediluted in 1X PBS with 0.1 mg/ml BSA (US sourced) and 0.05% sodium azide; *For IHC use only*	7 ml

[Bulk quote request](#)

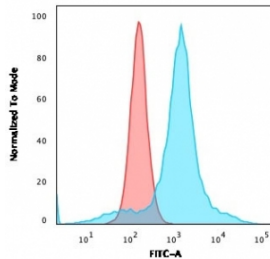
<b>Availability</b>	1-3 business days
<b>Species Reactivity</b>	Human
<b>Format</b>	Purified
<b>Clonality</b>	Monoclonal (mouse origin)
<b>Isotype</b>	Mouse IgG1, kappa
<b>Clone Name</b>	LAMP4/824
<b>Purity</b>	Protein G affinity chromatography
<b>UniProt</b>	P34810
<b>Localization</b>	Cytoplasmic, membrane
<b>Applications</b>	Western Blot : 1-2ug/ml Flow Cytometry : 1-2ug/10 <sup>6</sup> cells Immunohistochemistry (FFPE) : 0.5-1ug/ml for 30 min at RT
<b>Limitations</b>	This CD68 antibody is available for research use only.



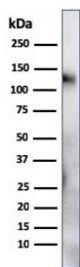
IHC: Formalin-fixed, paraffin-embedded human tonsil stained with CD68 antibody (LAMP4/824).



IHC: Formalin-fixed, paraffin-embedded human histiocytoma stained with CD68 antibody (LAMP4/824).



Flow cytometry testing of human U-87 MG cells with CD68 antibody (clone LAMP4/824); Red=isotype control, Blue= CD68 antibody.



Western blot testing of human spleen lysate with CD68 antibody (clone LAMP4/824). Expected molecular weight: 37-110 kDa depending on glycosylation level.

## Description

CD68 could play a role in phagocytic activities of tissue macrophages, both in intracellular lysosomal metabolism and extracellular cell-cell and cell-pathogen interactions. Binds to tissue- and organ-specific lectins or selectins, allowing homing of macrophage subsets to particular sites. Rapid recirculation of CD68 from endosomes and lysosomes to the plasma membrane may allow macrophages to crawl over selectin-bearing substrates or other cells. [UniProt]

## Application Notes

Optimal dilution of the CD68 antibody should be determined by the researcher.

1. Staining of formalin/paraffin tissues requires boiling tissue sections in 10mM Citrate buffer, pH 6.0, for 10-20 min followed by cooling at RT for 20 min.
2. The prediluted format is supplied in a dropper bottle and is optimized for use in IHC. After epitope retrieval step (if required), drip mAb solution onto the tissue section and incubate at RT for 30 min.

## Immunogen

Recombinant human protein was used as the immunogen for the CD68 antibody.

## Storage

Store the CD68 antibody at 2-8°C (with azide) or aliquot and store at -20°C or colder (without azide).

