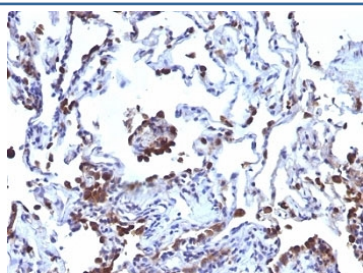


CD63 Antibody Cocktail [clone NKI/C3 + LAMP3/968] (V3030)

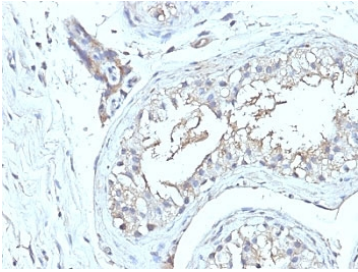
| Catalog No. | Formulation | Size |
|----------------|---|--------|
| V3030-100UG | 0.2 mg/ml in 1X PBS with 0.1 mg/ml BSA (US sourced) and 0.05% sodium azide | 100 ug |
| V3030-20UG | 0.2 mg/ml in 1X PBS with 0.1 mg/ml BSA (US sourced) and 0.05% sodium azide | 20 ug |
| V3030SAF-100UG | 1 mg/ml in 1X PBS; BSA free, sodium azide free | 100 ug |
| V3030IHC-7ML | Prediluted in 1X PBS with 0.1 mg/ml BSA (US sourced) and 0.05% sodium azide; *For IHC use only* | 7 ml |

Bulk quote request

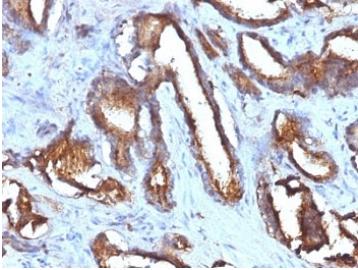
| | |
|---------------------------|--|
| Availability | 1-3 business days |
| Species Reactivity | Human |
| Format | Purified |
| Clonality | Monoclonal (mouse origin) |
| Isotype | Mouse IgG1 + IgG2a |
| Clone Name | NKI/C3 + LAMP3/968 |
| Purity | Protein G affinity chromatography |
| UniProt | P08962 |
| Localization | Cytoplasmic |
| Applications | Flow Cytometry : 0.5-1ug/10 ⁶ cells Immunofluorescence : 0.5-1ug/ml Immunohistochemistry (FFPE) : 1-2ug/ml for 30 min at RT |
| Limitations | This CD63 antibody cocktail is available for research use only. |



IHC: Formalin-fixed, paraffin-embedded human melanoma metastasized to lung stained with CD63 antibody (NKI/C3 + LAMP3/968)



IHC: Formalin-fixed, paraffin-embedded human testicular carcinoma stained with CD63 antibody (NKI/C3 + LAMP3/968)



IHC: Formalin-fixed, paraffin-embedded human prostate carcinoma stained with CD63 antibody (NKI/C3 + LAMP3/968)

Description

This mAb recognizes protein of 26kDa-60kDa, which is identified as CD63 / LAMP-3. The tetraspanins are integral membrane proteins expressed on cell surface and granular membranes of hematopoietic cells and are components of multi-molecular complexes with specific integrins. The tetraspanin CD63 is a lysosomal membrane glycoprotein that translocates to the plasma membrane after platelet activation. CD63 is expressed on activated platelets, monocytes and macrophages, and is weakly expressed on granulocytes, T cell and B cells. It is located on the basophilic granule membranes and on the plasma membranes of lymphocytes and granulocytes. CD63 is a member of the TM4 superfamily of leukocyte glycoproteins that includes CD9, CD37 and CD53, which contain four transmembrane regions. CD63 may play a role in phagocytic and intracellular lysosome-phagosome fusion events. CD63 deficiency is associated with Hermansky-Pudlak syndrome and is strongly expressed during the early stages of melanoma progression.

Application Notes

Optimal dilution of the CD63 antibody cocktail should be determined by the researcher.

1. Staining of formalin-fixed tissues requires boiling tissue sections in 10mM Citrate buffer, pH 6.0, for 10-20 min followed by cooling at RT for 20 min.
2. The prediluted format is supplied in a dropper bottle and is optimized for use in IHC. After epitope retrieval step (if required), drip mAb solution onto the tissue section and incubate at RT for 30 min.

Immunogen

The smooth plasma membrane fraction of MeWo cells (NKI/C3) and recombinant human full-length protein (LAMP3/968) were used as the immunogen for the CD63 antibody cocktail.

Storage

Store the CD63 antibody cocktail at 2-8°C (with azide) or aliquot and store at -20°C or colder (without azide).

