

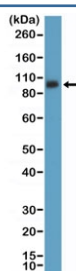
CD61 Antibody / ITGB3 [clone RM382] (R20400)

| Catalog No. | Formulation | Size |
|--------------|--|--------|
| R20400-0.1ML | Antibody in PBS with 50% glycerol, 1% BSA and 0.09% sodium azide | 100 ul |

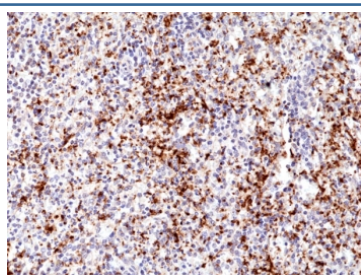
Recombinant **RABBIT MONOCLONAL**

[Bulk quote request](#)

| | |
|--------------------|--|
| Availability | 1-3 business days |
| Species Reactivity | Human, Mouse, Rat |
| Format | Purified |
| Clonality | Recombinant Rabbit Monoclonal |
| Isotype | Rabbit IgG |
| Clone Name | RM382 |
| Purity | Protein A purified from animal origin-free supernatant |
| UniProt | P05106 |
| Localization | Cell surface, cytoplasmic |
| Applications | Immunohistochemistry (FFPE) : 1:250-1:500 Western Blot : 1:5000-1:25000 |
| Limitations | This recombinant CD61 antibody is available for research use only. |



Western blot testing of mouse spleen tissue lysate with recombinant CD61 antibody at 1:5000 dilution. Expected molecular weight: 87-110 kDa depending on glycosylation level.



IHC staining of FFPE human spleen tissue with recombinant CD61 antibody at 1:500.

Description

This antibody reacts to human Integrin beta 3A / ITGB3 / CD61.

Application Notes

The stated application concentrations are suggested starting points. Titration of the recombinant CD61 antibody may be required due to differences in protocols and secondary/substrate sensitivity.

Immunogen

A peptide corresponding to the internal region of human Integrin B3 was used as the immunogen for the recombinant CD61 antibody.

Storage

Store the recombinant CD61 antibody at -20oC.