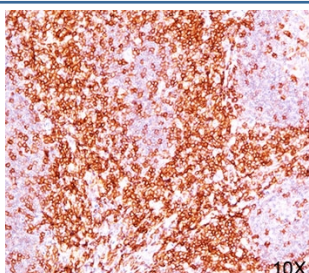


## CD6 Antibody Cocktail [clone C6/372 + 3F7B5] (V2041)

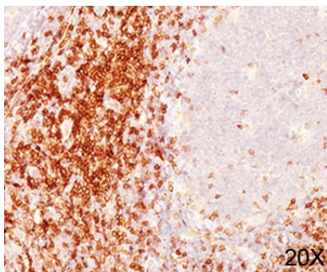
| Catalog No.    | Formulation   | Size   |
|----------------|---|--------|
| V2041-100UG    | 0.2 mg/ml in 1X PBS with 0.1 mg/ml BSA (US sourced) and 0.05% sodium azide                      | 100 ug |
| V2041-20UG     | 0.2 mg/ml in 1X PBS with 0.1 mg/ml BSA (US sourced) and 0.05% sodium azide                      | 20 ug  |
| V2041SAF-100UG | 1 mg/ml in 1X PBS; BSA free, sodium azide free  | 100 ug |
| V2041IHC-7ML   | Prediluted in 1X PBS with 0.1 mg/ml BSA (US sourced) and 0.05% sodium azide; *For IHC use only* | 7 ml   |

[Bulk quote request](#)

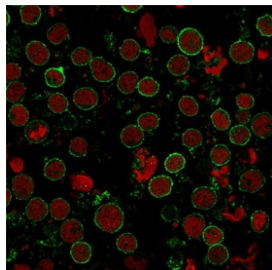
|                           |  |
|---------------------------|--|
| <b>Species Reactivity</b> | Human  |
| <b>Format</b>             | Purified   |
| <b>Clonality</b>          | Monoclonal (mouse origin)  |
| <b>Isotype</b>            | Mouse IgG1, kappa  |
| <b>Clone Name</b>         | C6/372 + 3F7B5   |
| <b>Purity</b>             | Protein G affinity chromatography  |
| <b>Buffer</b>             | 1X PBS, pH 7.4   |
| <b>Gene ID</b>            | 923  |
| <b>Localization</b>       | Cell surface and cytoplasmic   |
| <b>Applications</b>       | Immunofluorescence : 1-2ug/ml<br>Immunohistochemistry (FFPE) : 0.5-1ug/ml for 30 min at RT |
| <b>Limitations</b>        | This <b>CD6 antibody</b> is available for research use only.                               |



IHC testing of human tonsil (10X) stained with CD6 antibody cocktail (C6/372 + 3F7B5).



IHC testing of human tonsil (20X) stained with CD6 antibody cocktail (C6/372 + 3F7B5).



Immunofluorescent staining of human MOLT4 cells with CD6 antibody (green, clones C6/372 + 3F7B5) and Reddot nuclear stain (red).

## Description

CD6 is a type I transmembrane glycoprotein that contains a 24-amino acid signal sequence, three extracellular 'scavenger receptor cysteine-rich' (SRCR) domains, a membrane-spanning domain and a 44-amino acid cytoplasmic domain. The CD6 glycoprotein is tyrosine phosphorylated during TCR-mediated T cell activation. CD6 shows significant homology to CD5. CD6 is present on mature thymocytes, peripheral T cells and a subset of B cells. antibody to CD6 can be used to deplete T cells from bone marrow transplants to prevent graft versus host disease.

## Application Notes

The concentration stated for each application is a general starting point. Variations in protocols, secondaries and substrates may require the antibody to be titrated up or down for optimal performance.

1. Staining of formalin-fixed tissues requires boiling tissue sections in 10mM Citrate Buffer, pH 6.0, for 10-20 min followed by cooling at RT for 20 minutes.
2. The prediluted format is supplied in a dropper bottle and is optimized for use in IHC. After epitope retrieval step (if required), drip mAb solution onto the tissue section and incubate at RT for 30 min.

## Immunogen

Human recombinant CD6 protein (C6/372) and the rheumatoid synovial T cell line ST-1 (3F7B5) were used as the immunogen for this antibody cocktail.

## Storage

Store the CD6 antibody at 2-8oC (with azide) or aliquot and store at -20oC or colder (without azide).

## Alternate Names

T12; TP120, CD6 antibody

## References (1)

