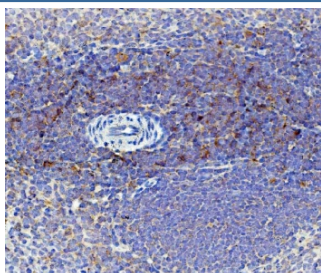


Cd59 Antibody (RQ5803)

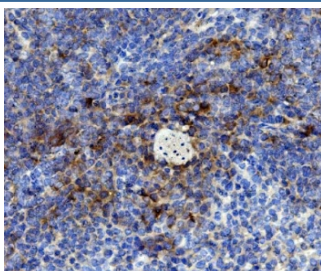
Catalog No.	Formulation	Size
RQ5803	0.5mg/ml if reconstituted with 0.2ml sterile DI water	100 ug

Bulk quote request

Availability	1-3 business days
Species Reactivity	Mouse, Rat
Format	Antigen affinity purified
Clonality	Polyclonal (rabbit origin)
Isotype	Rabbit IgG
Purity	Affinity purified
Buffer	Lyophilized from 1X PBS with 2% Trehalose and 0.025% sodium azide
UniProt	P27274
Localization	Plasma membrane, cytoplasm
Applications	Immunohistochemistry : 1-2ug/ml
Limitations	This Cd59 antibody is available for research use only.



IHC staining of FFPE rat spleen with Cd59 antibody. HIER: boil tissue sections in pH8 EDTA for 20 min and allow to cool before testing.



IHC staining of FFPE mouse spleen with Cd59 antibody. HIER: boil tissue sections in pH8 EDTA for 20 min and allow to cool before testing.

Description

This gene encodes a cell surface glycoprotein that regulates complement-mediated cell lysis, and it is involved in lymphocyte signal transduction. And this protein is a potent inhibitor of the complement membrane attack complex, whereby it binds complement C8 and/or C9 during the assembly of this complex, thereby inhibiting the incorporation of multiple copies of C9 into the complex, which is necessary for osmolytic pore formation. It also plays a role in signal transduction pathways in the activation of T cells. Mutations in this gene cause CD59 deficiency, a disease resulting in hemolytic anemia and thrombosis, and which causes cerebral infarction. Multiple alternatively spliced transcript variants, which encode the same protein, have been identified for this gene.

Application Notes

Optimal dilution of the Cd59 antibody should be determined by the researcher.

Immunogen

Amino acids KQVYQQCWRFSDCNAKFI from the rat protein were used as the immunogen for the Cd59 antibody.

Storage

After reconstitution, the Cd59 antibody can be stored for up to one month at 4°C. For long-term, aliquot and store at -20°C. Avoid repeated freezing and thawing.