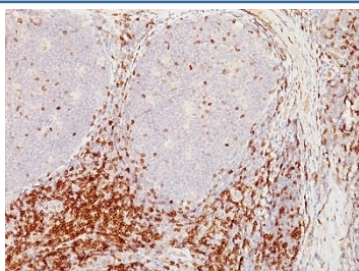


## CD5 Antibody [clone CD5/54/F6] (V3120)

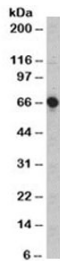
Catalog No.	Formulation	Size
V3120-100UG	0.2 mg/ml in 1X PBS with 0.1 mg/ml BSA (US sourced) and 0.05% sodium azide	100 ug
V3120-20UG	0.2 mg/ml in 1X PBS with 0.1 mg/ml BSA (US sourced) and 0.05% sodium azide	20 ug
V3120SAF-100UG	1 mg/ml in 1X PBS; BSA free, sodium azide free	100 ug
V3120IHC-7ML	Prediluted in 1X PBS with 0.1 mg/ml BSA (US sourced) and 0.05% sodium azide; *For IHC use only*	7 ml

**Bulk quote request**

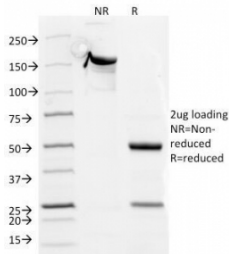
<b>Availability</b>	1-3 business days
<b>Species Reactivity</b>	Human, Rat
<b>Format</b>	Purified
<b>Clonality</b>	Monoclonal (mouse origin)
<b>Isotype</b>	Mouse IgG1, kappa
<b>Clone Name</b>	CD5/54/F6
<b>Purity</b>	Protein G affinity chromatography
<b>UniProt</b>	P06127
<b>Localization</b>	Cell surface
<b>Applications</b>	Immunohistochemistry (FFPE) : 1-2ug/ml for 30 min at RT
<b>Limitations</b>	This CD5 antibody is available for research use only.



IHC analysis of formalin-fixed, paraffin-embedded human tonsil stained with CD5 antibody (clone CD5/54/F6).



Western blot testing of MOLT4 cell lysate with CD5 antibody (clone CD5/54/F6).  
Observed molecular weight 55~67 kDa depending on glycosylation level.



SDS-PAGE Analysis of Purified, BSA-Free CD5 Antibody (clone CD5/54/F6).  
Confirmation of Integrity and Purity of the Antibody.

## Description

Recognizes a 67kDa transmembrane protein, which is identified as CD5. The CD5 antigen is found on 95% of thymocytes and 72% of peripheral blood lymphocytes. In lymph nodes, the main reactivity is observed in T cell areas. Anti-CD5 is a pan T-cell marker that also reacts with a range of neoplastic B-cells, e.g. chronic lymphocytic leukemia/small lymphocytic lymphoma (CLL/SLL), mantle cell lymphoma, and a subset (~10%) of diffuse large B-cell lymphoma. CD5 aberrant expression is useful in making a diagnosis of mature T-cell neoplasms. Anti-CD5 detection is diagnostic in CLL/SLL within a panel of other B-cell markers, especially one that includes anti-CD23. Anti-CD5 is also very useful in differentiating among mature small lymphoid cell malignancies. In addition, anti-CD5 can be used in distinguishing thymic carcinoma (+) from thymoma (-). Anti-CD5 does not react with granulocytes or monocytes.

## Application Notes

The optimal dilution of the CD5 antibody for each application should be determined by the researcher.

1. Staining of formalin-fixed tissues requires boiling tissue sections in 10mM citrate buffer, pH 6.0, for 10-20 min followed by cooling at RT for 20 minutes.
2. The prediluted format is supplied in a dropper bottle and is optimized for use in IHC. After epitope retrieval step (if required), drip mAb solution onto the tissue section and incubate at RT for 30 min.

## Immunogen

A portion of amino acids 450-495 from the human protein was used as the immunogen for this antibody.

## Storage

Store the CD5 antibody at 2-8oC (with azide) or aliquot and store at -20oC or colder (without azide).

