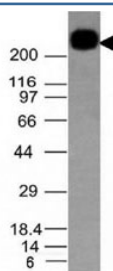


CD45RB Antibody [clone PTPRC/1132] (V2411)

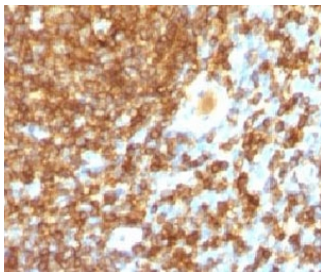
| Catalog No. | Formulation | Size |
|----------------|---|--------|
| V2411-100UG | 0.2 mg/ml in 1X PBS with 0.1 mg/ml BSA (US sourced) and 0.05% sodium azide | 100 ug |
| V2411-20UG | 0.2 mg/ml in 1X PBS with 0.1 mg/ml BSA (US sourced) and 0.05% sodium azide | 20 ug |
| V2411SAF-100UG | 1 mg/ml in 1X PBS; BSA free, sodium azide free | 100 ug |
| V2411IHC-7ML | Prediluted in 1X PBS with 0.1 mg/ml BSA (US sourced) and 0.05% sodium azide; *For IHC use only* | 7 ml |

[Bulk quote request](#)

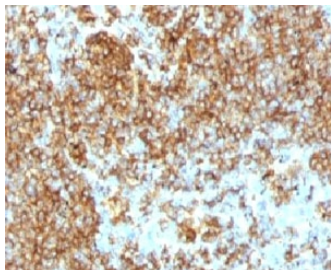
| | |
|---------------------------|--|
| Species Reactivity | Human |
| Format | Purified |
| Clonality | Monoclonal (mouse origin) |
| Isotype | Mouse IgG1, kappa |
| Clone Name | PTPRC/1132 |
| Purity | Protein G affinity chromatography |
| Buffer | 1X PBS, pH 7.4 |
| UniProt | P08575 |
| Localization | Cell surface and cytoplasmic |
| Applications | Western Blot : 0.5-1ug/ml Immunohistochemistry (FFPE) : 0.5-1ug/ml for 30 min at RT |
| Limitations | This CD45RB antibody is available for research use only. |



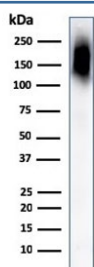
Western blot testing of CD45RB antibody and Daudi lysate. Expected molecular weight: ~147/180-220 kDa (unmodified/glycosylated).



IHC test of FFPE human tonsil probed with CD45RB antibody (PTPRC/1132).



IHC testing of CD45RB antibody and FFPE human lymphoma (PTPRC/1132).



Western blot testing of CD45RB antibody and human spleen lysate. Expected molecular weight: ~147/180-220 kDa (unmodified/glycosylated).

Description

CD45R, also designated CD45 and PTPRC, has been identified as a transmembrane glycoprotein, broadly expressed among hematopoietic cells. Multiple isoforms of CD45R are distributed throughout the immune system according to cell type. These isoforms arise because of alternative splicing of exons 4, 5, and 6. The corresponding protein domains are characterized by the binding of monoclonal antibodies specific for CD45RA (exon 4), CD45RB (exon 5), CD45RC (exon 6) and CD45RO (exons 4 to 6 spliced out). The variation in these isoforms is localized to the extracellular domain of CD45R, while the intracellular domain is conserved. CD45RB is expressed on mature B-lymphocytes and the majority of lymphomas and leukemias of B-cell origin. This antigen is also expressed on the surface of cells of myeloid lineage.

Application Notes

Due to variation in protocol and secondary antibody used, the CD45RB antibody may need to be titrated for optimal performance.

1. FFPE staining requires boiling tissue sections in 10mM citrate buffer, pH 6.0, for 10-20 min followed by cooling at RT for 20 minutes.
2. The prediluted format is supplied in a dropper bottle and is optimized for use in IHC. After epitope retrieval step (if required), drip mAb solution onto the tissue section and incubate at RT for 30 min.

Immunogen

Recombinant full-length human CD45RB protein was used as immunogen for this CD45RB antibody.

Storage

The CD45RB antibody (with azide) can be stored at 2-8°C. The azide-free format should be aliquoted and stored at -20°C or colder.

References (2)